



**NEBRASKA BALANCE OF STATE
YOUTH HOMELESS DEMONSTRATION PROGRAM
COORDINATED COMMUNITY PLAN**



Dear Community Partners,

We are the Youth Action Board (YAB), a collection of young people dedicated to improving the lives of homeless youth and striving to end homelessness all together.

Over the last few months we have gathered with various adult community partners to discuss and plan many possible solutions to homelessness within the youth community. A few of these solutions that YAB has focused on learning about include, but are not limited to; expanding the transitional housing programs, adjustments to the rapid rehousing programs, and developing systems to place homeless youth in their own long-term homes.

As a unit, we learned from our adult partners and from our peers about the struggles we face and our decent, still limited knowledge of the resources available. This experience has elevated our voices to new heights where we finally feel as though we are making a difference in our little corner of the world. These meetings have given us a front row seat to see the real change we are making and inspire and encourage us to march on in this fight to end youth homelessness.

While we have already accomplished many feats, that we once thought were nearly impossible, we are always glad to accept even more support from other youth and adult partners to help strengthen our voices even more and make these plans reality.

Thank you to those who have already attended and built this dream with us. For those who are reading this and would like to be a part of this change, we encourage you to get involved. The pride we feel in this movement is immense and makes us want to do more. It's a rewarding process that really makes a difference.

A special thanks to our Adult Community Partners for listening and supporting us in this endeavor. It means the world to us and we look forward to continuing our partnership in the times to come.

Sincerely,

A collection of handwritten signatures in black and blue ink. The signatures are arranged in two columns. The left column includes: Ariana Hargan, Karolyn Kudd, William G. Allen, Britt, DONNA RAYNE, Lilli Lipt, Felicity M. Ligel, and a signature that appears to be 'Frank'. The right column includes: Wally Newman, a signature that appears to be 'C. King', Annastacia Moore, Charles Scott Beebe, and a signature that appears to be 'Chae Curwick'.

TABLE OF CONTENTS

Shared Vision	4
Key Partners	5
Statement of Need	10
Subpopulations of Youth in the Nebraska Balance of State	16
USICH Core Outcomes	22
Stable Housing	22
Permanent Connections	23
Education and Employment	23
Social and Emotional Well-Being	23
Coordinated Entry for Youth	24
Positive Youth Development and Trauma-Informed Care	25
Ending Youth Homelessness in the Nebraska Balance of State	
Goal One	26
Goal Two	28
Goal Three	30
Goal Four	31
Proposed CoC Funded Intervention Types	33
Proposed list of Non-HUD funded projects	39
Governance Structure	46
Decision-Making Structure	46
Plan for Continuous Quality Improvement	47
YHDP Community Partners	49
Signatures from official representatives	52
References	53

SHARED VISION

1. Youth at risk of or experiencing homelessness are in safe and reliable places to call home with a youth-driven support system in place;
2. Youth imminently at risk of or experiencing homelessness have healthy and thriving services and connections and attachments to family, community, school, and other social networks;
3. Youth imminently at risk of or experiencing homelessness are actively engaged in education, training, and employment activities to thrive in adulthood and building behaviors and attitudes that allow long term success as an adult at work, in relationships and in the community;
4. The NE BoS CoC will have designed and implemented a youth homeless services system that is ending youth homelessness as determined by the United States Interagency Council on Homelessness

The shared vision statement above was created for the Youth Homeless Demonstration Program for the Nebraska Balance of State. This vision statement translates directly to become our four overarching goals for the coordinated community plan. This vision is creating new opportunities for youth to be the voice of change for their own success, developing places in our communities where they can find the security of stable housing to grow lasting roots, continue on a path of meaningful education and employment, and to expand the collaborative abilities of community based prevention systems to meet the needs of young adults throughout the state.

All across Nebraska, there is a dedication to core principles of family and a strong sense of community. These are the bedrock beliefs that make our small communities willing to collaborate and partner on collective efforts to help their fellow members succeed, because the success of all benefits all.

The YHDP coordinated community plan was designed to expand the strengths of the Nebraska Balance of State Continuum of Care (NE BoS CoC) through an alignment with the Connected Youth Initiative (CYI), a private/public rural community-based prevention system, and the innovative opportunities the YHDP funding will provide.

KEY PARTNERS

Nebraska Balance of State Continuum of Care

As a continuum of Care, the Nebraska Balance of State is primarily rural, covering 90 counties in over 76,000 square miles. Youth experiencing homelessness in our communities, whether unsheltered or 'couch surfing', have fewer survival options than their urban peers due to many factors, such as lack of public transit and few emergency shelter beds. As a result, youth are quicker to adopt high risk survival strategies shortly after finding themselves couch surfing or on the street. The significant number of our population of youth experiencing homelessness survive by couchsurfing at the homes of people they hardly know or come in contact with through their experiences on the street. Older youth who have themselves experienced homelessness sometimes lend space in their apartments/trailers and allow younger, minor, youth to stay there. This opens up unsafe situations and exploitation of the youth, just to have a place to sleep at night and maybe some food to eat.

The Nebraska Balance of State has created and implemented the All Doors Lead Home Coordinated Entry System that is working to:

- identify all youth who are at risk or currently experiencing homelessness through outreach and public doors access;
- prevent or divert those individuals and/or families from becoming homeless,
- properly assess needs and prioritization
- effectively link all youth experiencing homelessness to housing and services solutions that are tailored to their needs in a timely manner

Youth experience various situations prior to coming into contact with homeless service agencies and therefore, coordination is required with a wide variety of service providers to meet their needs of permanency.

Nebraska Children and Families Foundation

The YHDP lead agency is Nebraska Children and Families Foundation. Nebraska Children and Families Foundation was established in 1997 and has been a grant-making institution since inception. The 501(c)3 nonprofit was created as a result of a Family Preservation and Supportive Services Act statewide planning commission. The foundation was charged with being a strategy and funding vehicle capable of combining public and private interests and resources to strengthen systems and services responsible for keeping children safe while increasing protective factors to improve child and youth outcomes.

Nebraska Children and Families Foundation has previously established a strong network for their work with the older youth population, called the Connected Youth Initiative (CYI). CYI provides support to communities across the state to develop a community youth support system including central navigation, financial well-being opportunities, coaching and case management, and youth leadership opportunities. The mission of the CYI youth development model is to bring young people

together with service providers, funders and decision-makers to create supportive communities committed to improving outcomes for youth ages 14-24 who have foster care, juvenile justice or homelessness experiences. It is designed to build strong collaborations and infrastructure necessary for community ownership of youth well-being and the realization of improved youth outcomes. This model requires firm cross-sector commitments and adherence to the practices of collective impact, prevention, increasing protective and promotive factors and youth engagement. The CYI serves unconnected youth in more than 50 Nebraska counties and most of the state's population centers. Youth homelessness providers are connected to CYI community youth systems across the Balance of State, and implementation of new efforts to prevent and end youth homelessness will benefit from this connection to an existing collaborative system of support to youth.

One key component of the CYI framework is the coaching aspect which provides voluntary, client-driven, individualized support to the young adults. Coaching includes collaboration, youth empowerment, family, and community engagement as the core values and strategies. This approach focuses on preparing the youth to participate in service activities that will help them identify and achieve their chosen goals that prepare him/her for adulthood. The youth will have the opportunity to work with a coach to develop their individualized goals and outcomes to master chosen life skills. This is viewed as a process overtime and one that will require consistent teaching, feedback, and ongoing assessment of their progress towards self-efficacy and developmentally appropriate self-independence.

By expanding the coaching services across the Balance of State to unserved areas, all youth have the opportunity to work on the following outcomes which are uniquely individualized to meet their needs. Social and community integration is emphasized to support the youth's transition to education and/or employment, and ultimately self-sufficiency.

1. Personal and Community Engagement: Youth have supportive relationships, are able to access services in the community to achieve their personal goals and have a voice and a meaningful connection to their community through activities.
2. Education: Youth receive sufficient education and training to enable them to obtain and retain employment.
3. Employment: Youth generate a sufficient income to support themselves by obtaining and retaining employment.
4. Daily Living: Youth have access to safe, stable, affordable housing in the community that is near public transportation, school and work.
5. Physical and Behavioral Health: Youth have sufficient and affordable health insurance and services for both physical and behavioral health.
6. Training, Education and Policies: Independent living services have the capacity to address the individual needs of youth in transition.

7. **Economic Stability:** Provide youth with assistance in understanding daily budgets, accessing financial assistance and services, opening/maintaining bank accounts, and other financial learning skills.

Each of Nebraska Children's initiatives are part of a larger prevention portfolio, called Bring Up Nebraska, designed to strengthen children, families, and older youth; keeping them and their children out of the welfare and criminal justice systems from cradle to career. Bring Up Nebraska is a partnership between public and private human services agencies, the Nebraska Governor's office, and community well-being collaboratives across the state. Working directly with these community well-being collaboratives and the Bring Up Nebraska effort, the BoS CoC will have access to expert input as to the needs of communities in Nebraska, a connection to a directed advocacy and policy change effort to create lasting systems change, and opportunities for the growth of partnerships with vital public and private agencies that can support the success of the plan to end youth homelessness.

Other Nebraska Children Initiatives and Practices include:

Community Response: (CR) is a coordinated, voluntary prevention system available to all families in a community; connecting them with resources and support to help them meet their goals and strengthen relationships within their community through central navigation. CR is designed to reduce unnecessary involvement of higher-end systems (child welfare, juvenile justice, etc.) while increasing community supports, protective factors, and resilience for children and families.

Youth Thrive™: Youth Thrive is a companion framework to Strengthening Families from the Center for Study of Social Policy. It focuses on older children through adolescents and into early adulthood, ages 9-26 years old. And similar to Strengthening Families, Youth Thrive is based on current scientific research that supports building 5 protective and promotive factors in young people in order to reduce risk and enhancing healthy development and well-being. This framework is incorporated heavily into the CYI network.

Opportunity Passport™: a program offering financial literacy and matched Individual Development Accounts (IDAs) to transition aged foster youth. Opportunity Passport™ provides youth with financial literacy training and the ability to practice saving. Recognizing that many youth in care score high in Adverse Childhood Experiences (ACEs) and have an increased risk of under-employment and poverty after leaving care, Opportunity Passport™ incentivized positive savings practices towards identified assets. Assets include education, microbusiness, housing, and transportation. Youth are rewarded for positive financial behavior through a cash match of the money saved by the youth at the time of an asset purchase. The approved asset purchase could be a vehicle, future investment, entrepreneurial, housing related, educational, debt reduction, and/or a combination of the approved asset categories.

Back on Track™: The Connected Youth Initiative (CYI) will provide support services to YHDP youth using the evidence-based Jobs for the Future Back on Track™ model. In this youth-driven process, youth at high statistical risk of unfavorable life outcomes will progress through an intentional continuum of guided educational and employment competencies that yield postsecondary educational achievement, job credentials and careers of choice, with the goal of economic security. In addition,

partners will work to ensure that young people have access to mental health support to help eliminate barriers caused by behavioral and mental health challenges. Working together, the CYI initiative, Jobs for the Future Back on Track™ strategies, and proven financial case management hold the potential to set a new, higher standard for effectively meeting the real-life education and employment needs of unconnected young people across Nebraska.

Eviction Prevention Programming: Eviction Prevention Program is designed to be a service to young people who have received or could be at risk of receiving an eviction notice. The program provides coaching supports to help the youth plan out a sustainability plan to maintain their current housing and match funds to a youth portion of the rent or past rent to remove the eviction threat. Youth can only access this service 3 times a year and each time the youth portion of funds increases. Once the housing is stabilized, the youth will be offered other supports to help them financially plan to maintain their housing in the future. The Eviction Prevention Program provides this support person brief and focused help around eviction crisis situations.

University of Nebraska-Lincoln - Center on Children, Families, and the Law (UNL-CCFL)

The University of Nebraska-Lincoln Center on Children, Families and the Law was established in 1987 to serve as an interdisciplinary research, teaching, and public service resource on issues related to child and family policy and services. UNL-CCFL's mission is: Helping the helpers: providing an interdisciplinary and collaborative approach to improve systems and outcomes for children and families.

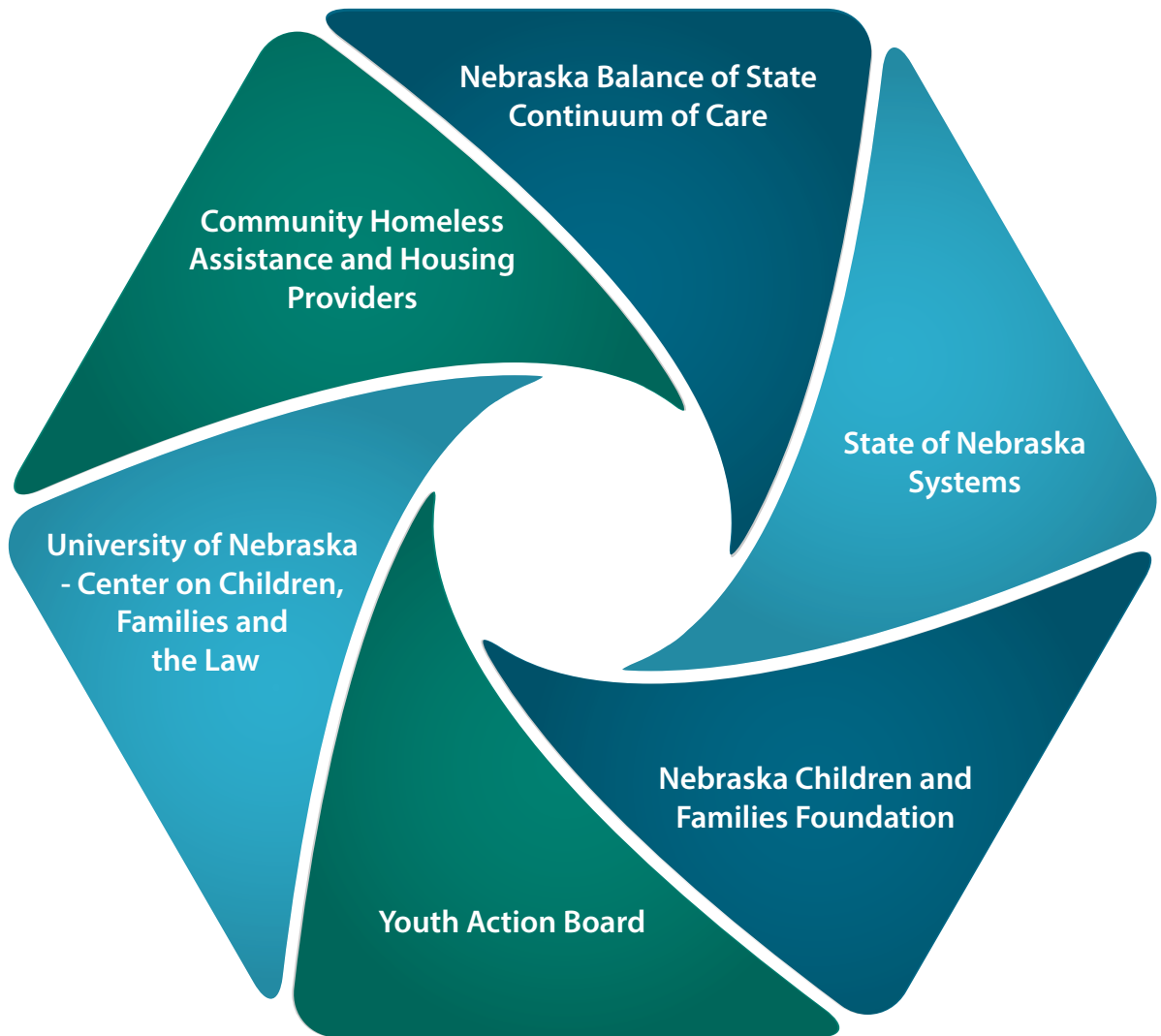
UNL-CCFL serves as the Nebraska Balance of State CoC Homeless Management Information System lead, the NE BoS CoC Homeless Coordinated Entry Lead, and the CoC Collaborative Applicant and a lead partner in the YHDP.

Youth Action Board

The Youth Action Board (YAB) served in an advisory role to the Ending Youth Homelessness Steering Committee, the leadership committee of the Nebraska BoS CoC, during the application and planning process for the YHDP. The YAB is comprised of homeless and formerly homeless youth ages 24 or younger. Created in 2018, YAB members have participated in BoS CoC meetings, as well as YAB specific subcommittee meetings where they approved the YHDP application.

The YAB will continue to serve as advisors to the YHDP Coordinated Community Plan. They will: 1) evaluate projects; 2) assess the needs of youth in the communities across the state; and, 3) spread awareness of available resources. The YAB will host regular conference calls, occasional in-person meetings and a representative from the YAB will report out to the BoS CoC during meetings and relay information back to their peers.

The NE BoS CoC will work in partnership with Nebraska Children, the Youth Action Board, and other valuable community partners to further connect these efforts with communities statewide in order to prevent and ultimately end homelessness among youth.



STATEMENT OF NEED

Community Data on Youth Experiencing homelessness

The Nebraska BoS CoC conducted a youth experiencing homelessness needs assessment in the winter of 2017- 2018. The BoS Youth Needs Assessment was a mixed method assessment. The needs assessment included analysis of HMIS data on homeless youth with services and/or homeless program entries or exits in the NE BoS CoC calendar years 2016 through 2017 and Coordinated Entry assessments of youth presenting as homeless for the same time period. The needs assessment incorporated youth homeless point in time data for the previous three years and homeless youth data from the Nebraska Department of Education homeless liaisons Edfacts system.

Through the needs assessment, the following was identified:

- At risk unaccompanied youth:
 - Estimate the number of youth: 1,125 [estimate derived from HMIS and Nebraska Department of Education (NDE) data sets]
- Unaccompanied youth experiencing homelessness
 - Single night count of youth: 53 (2017 Point in Time) 40 in 2018 PIT;
 - 500 youth in CY 2016 & 2017 (HMIS), 422 in school year 2016-17 (NDE)
 - 35 unaccompanied youth under age 19 in 2018 (HMIS)
- At risk parenting or pregnant youth
 - Estimate the number of youth 158 youth at risk parenting/pregnant and 22 pregnant (HMIS)
- Pregnant or parenting youth experiencing homelessness :
 - Estimate the number of youth 110 parenting / pregnant - 11 pregnant (HMIS)

Youth dedicated housing inventory, utilization, and geographic dispersion were examined as part of the needs assessment. In addition, an online survey of homeless system service providers was conducted focused on the effectiveness and gaps in the current youth services system and a survey of formerly or currently homeless youth and youth serving on the Youth Action Board was conducted focused on lived experiences, their concerns about the current system, service needs, and their input on how to prevent and end future homelessness among this population. This information was collected and analyzed by the UNL-Center on Children, Families, and the Law and reported on in the Nebraska Balance of State - Homeless Youth Needs Assessment Report.

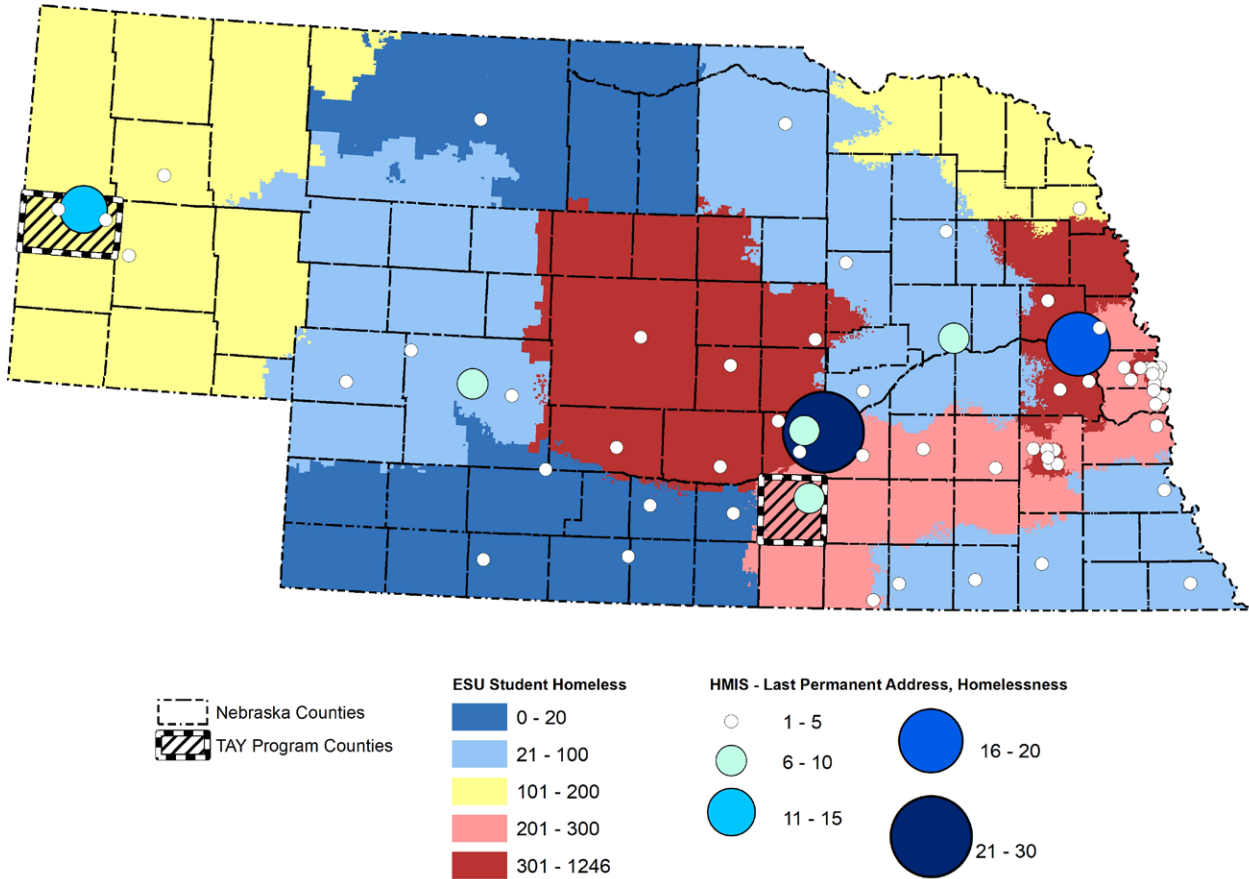
HMIS data including Point in Time (PIT), and Coordinated Entry Assessment data were from the entire BoC CoC service area and surveys of homeless system providers were made available to the entire service array represented in the CoC membership, including, all shelters, all CoC providers (TH, RRH, PSH, outreach) all ESG providers, mental and behavioral health provider, victim service providers, runaway and homeless youth providers, and child welfare agencies. The needs assessment target focus was on any youth 24 years of age or younger that was or is currently in contact with the homeless system across the BoS geographic area. Youth in HUD Homeless categories one through four were included when data were available.

Youth homeless point in time numbers have remained consistent the past three years in the NE BOS CoC with 58, 62, and 61 youth being identified on a single night in January. Over the course of the two year period from 2016 through 2017, 500 youth experiencing homelessness were entered into the BoS HMIS. Thirty-five (35) unaccompanied minor youth were identified in HMIS in the Longitudinal Systems Analysis (LSA) year 2018. There was an overrepresentation of females (55.8%), minority (15.4%) and Hispanic youth (19.8%) than represented in the transition aged youth (TAY) population of the BoS CoC. There was a higher percentage of TAY having not obtained their high school degree compared to all youth in the BoS CoC region. Significantly, 53% of those youth not finishing high school had completed the 11th grade but not finished their high school degree. Eighteen percent (18%) of youth in the homeless system had been in the foster care system.

Youth of all ages experiencing homelessness and at risk of experiencing homelessness were located throughout the CoC in the State of Nebraska with higher concentrations around and along the Interstate 80 corridor from Omaha, through Lincoln and the tri-cities (Grand Island, Hastings, and Kearney) to North Platte. This geographic distribution mirrors the overall BoS CoC population and overall homeless population.

Twenty percent (20%) of TAY had spent the evening prior to entry in an unsheltered location and most of those, 88%, had slept in their vehicle. Another 28% of all homeless TAY had slept the evening prior with family (18%) or friends (14%). Fourteen percent (14%) were coming from a rental unit they paid for without subsidy, 14% from another emergency shelter or hotel voucher, and 5% from jail or detention facility.

Nebraska 2017 Youth Homeless Populations



The most common place to sleep for youth experiencing homelessness was in a couchsurfing situation and 53% were staying with family members. Single youth experiencing homelessness were more likely to couch surf than family homeless TAY. Sixty-four (64%) of homeless TAY had a single entry into the homeless service system during the two year period. Fifty-three percent (53%) of system entry was into the emergency shelter segment with an average length of stay (LOS) of 26 days and the median LOS of 8. The next largest provider segment for homeless TAY were the runaway and homeless youth programs with 14% and rapid rehousing programs with 12%.

Single youth experiencing homelessness were more likely to be male (65%) compared to homeless family TAY who were 76% female. Forty-four percent (44%) of youth reported some source of income and 72% reported the presence of a disabling condition. Forty-five percent (45%) of homeless TAY were experiencing their first episode of homelessness. The average Coordinated Entry assessment score using the TAY-VI-SPDAT was 7.4 with the most common score being a 4. For homeless TAY families average assessment score was 8.5 using the FAM-VI-SPDAT compared to the average non-TAY FAM-VI-SPDAT score of 10.2.

There were 38 dedicated youth homeless units, 12 permanent supportive housing – chronic and 26 transitional housing, in the BoS CoC during 2017, 21 of which were dedicated beds for youth with children. Utilization of the dedicated youth beds during 2017 PIT was ninety-three percent. Sixty percent of all youth dedicated beds are in the far western region of the CoC with the remaining forty percent in the central region and no youth dedicated beds in the eastern and most heavily populated region of the state and CoC.

Homeless youth service providers indicate the primary factors contributing to rural youth homelessness are the youths' home environment and support system overall, youth mental health issues, both parental and youth substance abuse, and housing affordability and availability. The most important actions the BoS CoC could undertake to prevent future youth homelessness include in order:



1. identify, create, develop more affordable housing



2. develop holistic support system that includes entire family



3. increase availability of mental health and counseling services.

The single greatest barrier from provider's perspective in housing youth is the availability and affordability of housing in rural areas. Other barriers identified include absence of support services, employment, and transportation, mental health and substance abuse, and youth education and accountability. In terms of specific homeless programming needed, emergency shelter programs and rapid rehousing were identified most often by service providers as needed to meet the need.

Providers indicated that innovative programs they would like to see to prevent and end youth homelessness would include more flexible funding options to rapidly meet existing needs and barriers to prevent or end a homeless situation. Providers also believe effective programs could include service centers in schools to help youth find needed services in a safe place and host homes programs with additional coaching and case management.

Homeless and formerly homeless youth indicate that life skills and job skills training to help prevent youth from ever becoming homeless along with increased knowledge of available resources to help and assistance before entering a homeless situation. Assistance that is identified by youth that has been helpful includes mainstream resources, particularly SNAP/EBT and life skills programs such as preparation for adult living and case management through housing programs. The greatest challenges homeless and formerly homeless youth indicated during their time homeless are the basics of finding shelter, maintaining hygiene and nutrition. Youth indicated for example flexible

diversion type assistance and life skills programming as things they would recommend be the focus to prevent youth in the future from becoming homeless.

Analysis of youth housing inventory and coordinated entry referrals and priority assessments indicate a greater need for all types of housing for those 24 years and under including permanent supportive and rapid re-housing programs. In addition, the geographic distribution of our current youth housing programs is not ideal with areas of the BoS with significant youth populations having few to no housing programs focused on youth.

The number of unaccompanied youth identified in the 2017 sheltered PIT count was 53. This figure decreased to 40 in the 2018 PIT count. Of the 53 youth counted in the 2017 PIT, 15 were pregnant and 16 were parenting. There was one unsheltered youth identified.

In the 2016-2017 school year 422 unaccompanied homeless youth were reported by local education agencies in the Nebraska BoS CoC and submitted to the Department of Education EdFacts system.

The following factors have been identified as primary in contributing to a significant amount of youth homelessness in rural Nebraska: unstable home environments that include substance abuse or mental health issues of either the youth and/or parent(s); housing availability and affordability; insufficient availability of adult living skills services for youth in unstable households; lack of flexible, real-time, school-based, whole-family prevention and diversion financial assistance.

These factors have been identified through analysis of youth self-report of factors that lead to their homeless episode as assessed with the Transition Age Youth Vulnerability Index and Service Prioritization Decision Assistance Tool (TAY VI-SPDAT) which is completed by all consenting youth experiencing homelessness and used in the NE-BOS coordinated entry priority system. These factors have also been identified through the NE-BoS Homeless Youth Needs Assessment from the input of homelessness service provider and current or formerly homeless youth.

According to the October 2017 Connected Youth Initiative Transitional Services Survey, a survey administered twice yearly to young people across the state, only 65.1% of young people ages 19 and up reported having access to affordable, safe, and stable housing among those who pay for housing. Some potential factors that may contribute to the 39.1% of youth that pay for housing and did not report access to affordable, safe, and stable housing are only 62.1% of youth reported having had enough money to pay for expenses in the last month and 85.1% of youth 19+ reported having access to transportation for work or school. Access to transportation has historically been an issue for youth in the state, particularly in rural areas, and a contributing factor in young people being able to secure and maintain independent housing in that a lack of access to transportation can be attributed to a lack of access to education and employment, which in turn can contribute to difficulties for young people in maintaining financial stability. Historically, this difficulty with financial stability greatly affects the ability of young people to secure and maintain independent housing due to a potential lack of credit or unhealthy credit, a history of eviction or other legal difficulties, inconsistent levels of income, and comparatively high debt to income ratios.

Finally, at-risk unaccompanied youth, youth experiencing homelessness, and pregnant and parenting youth that are at-risk or homeless in Nebraska face additional social and emotional challenges that far exceed those of similarly aged youth who are not at-risk or homeless. These additional challenges include higher incidence of depression, anxiety, post-traumatic stress, and suicide ideation. These youth also experience greater challenges in developing healthy and trusting relationships which further increases youth isolation and increased mental and emotional challenges.

SUBPOPULATIONS OF YOUTH IN THE NEBRASKA BALANCE OF STATE:

LGBTQ

LGBTQ youth are overrepresented among the homeless population, representing between 20% to 30% of the population of youth experiencing homelessness, and are at a much higher risk of experiencing homelessness compared to heterosexual and cisgender youth. LGBTQ youth of color experiencing homelessness are at even higher percentages. LGBTQ youth are also homeless for longer periods of time and have greater risks of physical and mental health problems than non-LGBTQ youth. The most commonly reported reason that LGBTQ young people experience a homeless episode is because they were forced out of their home because of their sexual orientation or gender identity.

After LGBTQ youth become homeless they continue to face discrimination and challenges including the ability to find shelter that will accept and respect them.

Strategies the YHDP Community will adopt to address homelessness among LGBTQ Youth:

- Train community partners and agencies on the needs and best practices related to serving LGBTQ youth
- Provide additional inclusion training by True Colors Fund to all homeless and shelter services providers
- Helping youth relocate through transportation and moving assistance to a community of their choice in which housing opportunities exist as identified through Coordinated Entry
- Connecting youth to the larger Nebraska LGBTQ community

Minors (unaccompanied youth 18 and under)

As reported for the Balance of State 2018 LSA, there were 35 unaccompanied minors served during the past year. The current availability of housing resources for unaccompanied minors (under 18) is limited to one Runaway and Homeless Youth program located on the very western edge of the state of Nebraska. Community Action Partnership of Western Nebraska (CAPWN) Youth Shelter Basic Center Program has a long and productive history of meeting the needs of runaway, homeless, and street youth in rural Nebraska. Most of the area would be classified as rural or frontier which provides enticing conditions for the flow of drugs and human trafficking along the Interstate 80 corridor in the southern Panhandle. This rural environment, enhanced by transient families, high poverty, limited living wage employment and little affordable housing has resulted in a large population of homeless and at risk youth including minors. Over 216 youth under the age of 18 (unduplicated) have accessed this shelter over the past three and a half years. Although the state of Nebraska recognizes 19 as the age of majority for young adults, the NE BoS CoC intends to build on this by providing a variety of shelter and crisis housing options for minor youth in their communities of choice, including but not limited to the emergency host home model.

Strategies the YHDP Community will adopt to address homelessness among unaccompanied minors:

- Geographical dispersion of Shelter/Housing options for minors throughout the Balance of State especially emergency host homes
- Utilize Coaching strategies to work with minor youth and engage their families, if possible, to support re-unification
- Connect or provide resources to families to support them if youth are able to stay in their home. (in home family support, other diversion supports, mediation, etc.)
- Enlist the services of Family Finding agencies in locating supportive networks of extended family and/or friends

Youth with Disabilities:

Emerging research indicates that youth with cognitive, mental health and physical disabilities are more likely to experience a homeless situation and that rates of cognitive disabilities are higher among the homeless population than the population in general (Collins, et. al 2018). It is also the case that youth experiencing homelessness have struggled in the past or are currently struggling with education and employment issues that have either contributed to their housing instability or are greatly complicated as they try to manage their housing crisis. These challenges are significantly increased for youth with disabilities that are at risk of or currently experiencing homelessness. Accessing public benefits is a key part of a systemic response to ending youth homelessness and represents an innovative model for increasing income and housing stability for youth who have disabling conditions.

Strategies the YHDP Community will adopt to address homelessness among youth with developmental disabilities:

- Develop and conduct needs assessment focused on youth experiencing homelessness in the BoS CoC with disabilities in order to better understand scope and challenges specific to the CoC and State
- Incorporating SOAR identification and referral mechanisms into the housing service system to assist youth in accessing Supplemental Security Income (SSI)/Supplemental Security Disability Insurance (SSDI) income while obtaining permanent housing
- Develop a youth homeless service system that recognizes disability services are a critical homeless system component that seamlessly integrate homeless and disability services for youth
- Engage youth-centered mental health and substance abuse treatment professionals in the housing service system.
- Increase availability of permanent supportive housing options across the CoC.

Pregnant and Parenting youth

Youth experiencing homelessness experience higher rates of pregnancy and parenthood than youth not experiencing homelessness. Pregnant youth experiencing homelessness are at increased risk of negative outcomes as a result of their housing situation. In addition to the adverse outcomes associated with any youth being homeless, pregnant youth are less likely to have access to and receive prenatal care, and are at a higher risk of delivering prematurely and of having low-birth weight infants.

Parenting youth and their children experiencing homelessness remain at higher risk for multiple adverse outcomes associated with their homeless situation, including due to lack of access to postpartum (mental and physical) and infant health care. Parenting youth often lack sustainable connections with family and community supports, and the stable, healthy environments conducive to healthy child development.

Strategies the YHDP Community will adopt to address homelessness among pregnant and parenting youth:

- Utilize coaching and case management services that address the whole family unit to include the youth as a young adult, the youth as a parent, and the needs of children (Families Thrive training).
- Increase the availability of and access to prenatal care
- Provide daycare or night care options for children so parents can work to support their independent living arrangements
- Develop additional holistic family services and supports that increase connections to family and positive social support networks (both after homeless situation and as a homeless prevention effort) and while receiving needed services.
- Improve parenting and pregnant youth access to and receipt of mainstream resources through assistance in the ACCESS Nebraska application.

Youth involved in the Justice System

Although research on the interaction between justice system involvement and homelessness is relatively limited, the studies that do exist suggest that youth experiencing homelessness are at increased risk of involvement in the juvenile justice system and youth in the juvenile justice system at increased risk of experiencing homelessness. The Administration on Children, Youth and Families recently conducted a survey of runaway and homeless youth and found that 44% of homeless youth had some experience in jail or juvenile detention, 78% had at least one interaction with the police, and 62% had been arrested (Administration on Children, Youth and Families, Family and Youth Services Bureau Street Outreach Program Data Collection Project Final Report, April 2016). Youth exiting the juvenile justice system face many of the same challenges that adults exiting corrections do, which include difficulties in finding employment and housing, and reconnecting with family and social support networks.

Strategies the YHDP Community will adopt to address homelessness among youth involved in the Justice System:

- Increase and improve partnerships between homeless system (YHDP) providers and the Nebraska State Probation.
- Develop cross system (juvenile justice, Child Welfare, CoC) data sharing capabilities to assist with identification and service provision to at risk youth and to provide data for further research in the understanding of the cross system experience of homeless youth.
- Educate the Judicial System on availability of community based housing system resources (including Coordinated Entry, coordinate with juvenile justice local offices)
- Discuss ability to make referrals to Connected Youth Initiative sooner than 6 months post probationary period.
- Increase independent coaching for youth with juvenile justice involvement
- Develop a diversion program that decriminalizes “homelessness” / “survival crimes”
- Ensure that detention is never used as a solution to homelessness.
- Explore additional avenues of keeping youth in their own communities while involved in the juvenile justice system.

Youth involved in Child Welfare:

Youth in the child welfare system have normal adolescent experiences but also have the added challenges of home, school, and relational disruptions. These disruptions limit youth in being able to develop unconditional support networks that are vital to keep them safe and stable as they transition into adulthood. Youth who have experienced the foster care system are more likely to experience homelessness and housing insecurity than their peers nationwide. In Nebraska, 42% of youth age out of foster care to a non-permanent situation without any stable adult connections. (Annie E. Casey Foundation). Nebraska does offer a voluntary independent living program for youth who age have been involved in the child welfare system due to no fault of their own, the Bridge to Independence (B2i) offers supports on a voluntary basis only until youth become the age of 21. However, about 20% of youth do not choose to enroll the program during the difficult transition period. YHDP offers an opportunity to help youth who have experienced the foster care system and have either aged out at 21, disengaged from the independent living programs, or do not enter the state sponsored independent living program to find permanent housing and stop the cycle of living disruptions.

Strategies the YHDP Community will adopt to address homelessness among youth involved in the child welfare system:

- Collaborate with NDHHS and Bridges to Independence (B2I) program to develop and conduct study on needs and outcomes of youth exiting child welfare systems.
- Connection to the CYI older youth prevention system coaches and services for youth who are aging out of the system
- Case Planning with DHHS case workers who have a youth currently in the foster care system with an Independent Living Permanency objective that are not eligible for Bridge to Independence.
- YHDP and DHHS have developed priority guidelines to access available beds for youth prior to exiting foster care system

Undocumented youth:

Undocumented youth can experience high levels of acculturative stress from immigration-related issues such as separation from family, the stress of deportation, and academic difficulties. One of the most significant stressors for undocumented immigrants can be the fear of deportation, which can impact immigrants' daily lives and may be a constant concern. Due to lack of housing availability for immigrant families, they are forced to double up, increasing the risk of housing instability, lease agreement conflicts, lack of renter history, and/or lack of housing options once the current living arrangement is no longer available.

Strategies the YHDP Community will adopt to address homelessness among undocumented youth:

- Develop a data agenda to evaluate the outcomes and needs of undocumented youth in Nebraska.
- Engage undocumented youth and their community through concerted efforts to increase self efficacy and housing options
- Provide education to agencies on their ability to accept undocumented youth into HUD-funded programming for YHDP
- Strengthen exit strategies from the program by expanding housing options through landlord or property management relationships (e.g. help them get a lease)
- Increase access to immigration legal services
- Increase immediate access to educational and employment services
- Increase access to medical and mental health care through System of Care funds
- Provide sponsors, coaching, or other community based supports to improve stability outcomes for undocumented youth

Victims of Sexual Trafficking and Exploitation

Youth running away from home or experiencing homelessness are at increased risk of being sexually exploited and victims of human trafficking. Nationally, studies suggest that up to 41% of homeless youth are victims of exploitation or trafficking. According to National Human Trafficking Hotline, 36 human trafficking cases were reported in Nebraska in 2018, 63 in 2017, and 43 in 2016. Youth experiencing sexual exploitation and trafficking are at higher risk for many negative outcomes, including suicide and substance abuse. Additional risk factors for sexually exploited and runaway youth are the condition of being moved to new communities and having a lack of social capital to ask for assistance to be removed from their current circumstance.

Strategies the YHDP Community will adopt to address homelessness among youth victims of trafficking and exploitation:

- Incorporate domestic violence providers into with YHDP into the provision of survivor-focused services.
- Strengthen relationship with the Nebraska Attorney General's Human Trafficking Task Force and the Continuum of Care.
- Provide guidance on housing resources to local law enforcement across the state through the Attorney General's Human Tracking Task Force trainings.
- Extend access to shelter services that serve sex trafficking victims across the state.
- Work with regional sex trafficking task forces to help identify and provide treatment services for victims of sex trafficking experiencing homelessness.
- Utilize the Standards of Care to Support Victims/Survivors on Trafficking tool to enhance local coordination and collaboration for support and utilize an established continuum of specialized community supports.
- Connect with local and regional advocacy and human/sex trafficking prevention organizations to educate and develop prevention and rescue programming

Key Strategies for youth who are at risk or currently experiencing homelessness

The following strategies apply for all youth experiencing homelessness across the rural state of Nebraska. These, along with the identified strategies for the subpopulations will be reflected throughout the coordinated community plans goals, objectives, and action steps .

- Increase shelter opportunities for all youth populations
- Increase access to transportation
- Increase access to medical and mental health care through System of Care funds
- Integrate financial well-being through financial literacy and access to asset purchase programs, e.g. "Opportunity Passport™" and "Your Money, Your Goals"
- Align federal funding efforts of John A. Chafee and Educational Training Vouchers (ETV) funds with YHDP for youth who qualify for Chafee and ETV services to increase the educational and employment achievement by securing safe and stable housing.
- Develop standards of practice with post-secondary institutions to increase on-campus services and supports for youth who are at risk and/or experiencing homelessness.
- Utilize YHDP housing units to complement CYI coaching and case management, including ability to reach juvenile justice, former foster youth, RHY, and the undocumented immigrant population.
- Develop eviction prevention supports through rental assistance, legal aid, and coaching.
- Create youth-centered, trauma informed environments to provide a safe sanctuary for youth experiencing homelessness to seek assistance
- Educate community, particularly those who may come in contact with youth, about resources and how to make referrals to appropriate supports.

USICH CORE OUTCOMES

Stable housing:



Providing an adequate capacity of youth-focused housing across the rural balance of state of Nebraska is a primary objective of the YHDP. All youth experiencing homelessness shall have immediate access to safe, secure, and stable housing of their choice without preconditions. This outcome will in part be accomplished through the development of additional needs based and innovative housing projects and housing support services through CoC funding. This outcome will in part be accomplished through coordinated efforts and integration at the state level of the multiple systems and agencies that work with and assist the youth population including the Department of Health and Human Services, Department of Education, Office of Probation, and the Nebraska Commission on Housing and Homelessness, around the goals, objectives, and actions identified in YHDP Comprehensive Community Plan. This outcome will in part also be accomplished by enhancing and expanding the collaborative partnerships between the Nebraska Children and Families Foundation's Connected Youth Initiative, the Nebraska Department of Education, and the Balance of State Continuum of Care All Doors Lead Home Coordinated Entry and Homeless Management Information Systems. Integrating these efforts by creating a seamless information system in which any youth in a housing crisis no matter where or by whom identified, is rapidly and in a positive and trauma informed manner connected to the Nebraska Balance of State homeless service system.

- **OBJECTIVE 1.1** Increase housing inventory and diversify program type and geographic availability to ensure homelessness is of short duration
- **OBJECTIVE 1.2** Increase crisis housing availability in underserved areas
- **OBJECTIVE 1.3** Expansion of coordinated entry access points that are youth focused
- **OBJECTIVE 1.4** Develop resource capacity to prevent and divert youth from experiencing homelessness
- **OBJECTIVE 1.5** Develop infrastructure and service capacity to transport youth to housing availability
- **OBJECTIVE 1.6** Explore alternative housing models that incorporate youth-driven supports
- **OBJECTIVE 4.1** Identifies all unaccompanied youth experiencing homelessness
- **OBJECTIVE 4.2** Use prevention and diversion strategies whenever possible, and otherwise provide immediate access to low-barrier crisis housing and services to any youth who needs and wants it.
- **OBJECTIVE 4.3** Use coordinated entry processes to effectively link all youth experiencing homelessness to housing and services solutions that are tailored to their needs
- **OBJECTIVE 4.4** System acts with urgency to swiftly assist youth to move in to permanent or non-time-limited housing options with appropriate services and supports.
- **OBJECTIVE 4.5** System has resources, plans, and system capacity in place to continue to prevent and quickly end future experiences of homelessness among youth

Permanent Connections:



The Nebraska YHDP plan will emphasize the fostering of permanent connections in order to prevent and end homelessness among youth. This will occur by assisting youth to connect with their peers, mentors or 'coaches', family finding services as well as reunification as appropriate. Nebraska Children through CYI has been developing several resources that address the strategy of permanent connections which will be expanded through the YHDP process.

- **OBJECTIVE 2.1** Develop technology-based solutions to permanent connection
- **OBJECTIVE 2.3** Improve and expand connections to current community-based resources
- **OBJECTIVE 2.5** Develop resources and programming that holistically engage the youth and family



Education and Employment:

A key component of our YHDP plan is to enhance the partnerships between the Education and Employment systems with the housing opportunities and interventions available through the Continuum of Care. This will be accomplished by expanding the knowledge of community resources of local McKinney-Vento Liaisons and their capacity to refer to the coordinated entry system, which includes but is not limited to the CYI prevention efforts as well as housing resources. The YHDP team will continue to ensure that educational and employment opportunities are developmentally appropriate and available all across the service area to the best of our ability.

- **OBJECTIVE 3.1** Develop education and workforce opportunities across the Continuum that meet the diverse workforce needs of youth.
- **OBJECTIVE 3.2** Further develop partnership between educational system (all levels) stakeholders and Continuum of Care



Social and Emotional Well-being:

The social and emotional well-being of youth at risk or experiencing homelessness and at-risk and homeless pregnant and parenting youth will be addressed through several goals. All YHDP projects will be required to train staff in Positive Youth Development and Trauma Informed Care approaches. Services shall assist youth holistically by providing comprehensive wrap around services that address their physical, mental, emotional, and social needs .

- **OBJECTIVE 2.2** Explore alternative case management models for youth
- **OBJECTIVE 2.4** Expand youth-centered training for housing system case management staff
- **OBJECTIVE 2.5** Expand connection to existing mainstream resources

COORDINATED ENTRY FOR TRANSITION AGED YOUTH

The All Doors Lead Home Coordinated Entry System is individualized, client driven and uses a no wrong door approach for eligibility, access, and assessment. The YHDP team would like to expand the access points to include more youth-focused providers as well as expand outreach/awareness efforts into the education system. Once a youth is identified, they may complete the TAY VI-SPDAT or the Family VI-SPDAT if they are pregnant or parenting. Youth are then placed on the by-name list which is reviewed on a weekly basis. The by-name list referrals allows youth to access housing resources in their community of origin or the ability to relocate as desired, even to another continuum (i.e. from the BoS CoC to the Lincoln CoC). The All Doors Lead Home CE System also incorporates youth (client) choice and flexibility by allowing a youth to decline a housing offer if it does not best suit their needs without losing their placement on the by-name list. The All Doors Lead Home CE System recognizes the flexibility needed when working with the transition age youth population and therefore allows a youth to remain on the by-name list for 90 days without contact. If the 90-day no contact period has passed and the youth then re-engages with a provider, a new CE referral can be made.

The expansion of public doors and access points for Coordinated Entry is essential during the implementation of the Coordinated Community Plan. The All Doors Lead Home Coordinated Entry System was designed to limit the re-traumatization that can occur from multiple forms of outreach and assessment, therefore all interventions targeting youth experiencing homelessness shall be linked to the ADLH Coordinated Entry System to maintain the trauma-informed principles of the YHDP.

For further information on All Doors Lead Home Coordinated Entry policies and procedures, please refer to the [Coordinated Entry Manual](#).

POSITIVE YOUTH DEVELOPMENT AND TRAUMA-INFORMED CARE

Positive Youth Development (PYD): generally includes the development of competence, confidence, character, connection, and caring, leading to youth contributions. It is an intentional, prosocial approach that engages youth within their communities, schools, organizations, peer groups, and families in a manner that is productive and constructive; recognizes, utilizes, and enhances young people's strengths; and promotes positive outcomes for young people by providing opportunities, fostering positive relationships, and furnishing the support needed to build on their leadership strengths.

Nebraska Balance of State will use this YHDP opportunity to expand Nebraska Children's current variety of programming highlighting Positive Youth Development aspects, such as but not limited to Youth Thrive™ and Back on Track™. YHDP funded projects will also be required to identify ways they provide socially supportive engagement for young people experiencing homelessness in their programs.

Trauma-Informed Care (TIC): grounded in and directed by a thorough understanding of the effects of trauma and prevalence of these experiences in persons who seek and receive services

- A program, organization, or system that is trauma informed *realizes* the realizes the widespread impact of trauma and understands potential paths for recovery; *recognizes* the signs and symptoms of trauma in clients, families, staff, and others involved with the system; responds by fully integrating knowledge about trauma into policies, procedures, and practices; and seeks to actively resist *re-traumatization*." (<https://www.samhsa.gov/nctic/trauma-interventions>)

All of the housing programs and supportive services will encompass a trauma-informed approach for the youth they are serving. Trauma-informed care is a founding principle behind the All Doors Lead Home Coordinated Entry System and is a primary objective of the Coordinated Community Plan. This will be completed by providing TIC training to new and existing staff and by creating youth focused programming based off of the feedback from our youth action board members.

ENDING YOUTH HOMELESSNESS IN THE BALANCE OF STATE

GOAL ONE: Youth at risk of or experiencing homelessness are in safe and reliable places to call home with a youth-driven support system in place.

Objective 1.1 Increase housing inventory and diversify program type and geographic availability to ensure homelessness is of short duration	Responsible Party	Timeframe
Conduct comprehensive youth diversion, shelter, and housing system modeling housing to refine needed housing program resource allocation to inform YHDP RFP	UNL-CCFL	Currently Ongoing
Improve geographic dispersion of youth-focused housing programming and housing inventory	BoS CoC, YHDP Project Applicants	Upcoming September 2019 through YHDP Projects
Increase Rapid Rehousing program inventory and capacity	BoS CoC, YHDP Project Applicants	Upcoming September 2019 through YHDP Projects
Increase Permanent supportive housing program inventory and capacity	BoS CoC, YHDP Project Applicants	Upcoming September 2019 through YHDP Projects
Develop Joint TH-RRH program(s) that provide multi-region and/or CoC wide coverage.	BoS CoC, YHDP Project Applicants	Upcoming September 2019 through YHDP Projects
Host Home programing and develop a statewide host home network	BoS CoC, YHDP Project Applicants	Upcoming September 2019 through YHDP Projects
Create a fund to provide a stipend for the youth to be able to pay for transportation to school or work and/or to help pay for hygiene expenses/clothing/other needs	Non-CoC Funded Project Development Group, NCFF/CYI	Upcoming January 2020 to fill in gaps of project plans
Create a fund to help support the host home with additional costs of another person living in the home such as increased utilities/food/transportation costs	BoS CoC, Youth Steering Committee, UNL-CCFL - Coordinated Entry, NCFF/CYI	Upcoming September 2019 with YHDP Projects
Coaching services through the CYI network attached to the youth in host homes to support them in reaching their goals to be independent and move out of the host home	Youth Steering Committee, NCFF/CYI	Upcoming September 2019 through YHDP Projects
Work with Public Housing Authorities to provide preferences for vouchers or public housing for youth experiencing homelessness	BoS CoC, YHDP Evaluation and System Integration Group, Nebraska Investment Finance Authority (NIFA)	Ongoing
Explore possibility of using HUD's HOME Investment Partnerships Program, HUD's National Housing Trust Fund and the Nebraska Affordable Housing Trust Fund to provide affordable housing options for homeless youth	NIFA, Economic Development, DHHS, UNL-CCFL, Non-CoC Funded Project Development Group, NCFF/CYI	Upcoming December 2019
Address CE prioritization for homeless youth	BoS CoC, UNL-CCFL	Completed prior to September 2019

Objective 1.2 Increase crisis housing availability in underserved areas	Responsible Party	Timeframe
Develop joint TH-RRH programs to provide crisis housing to increase the inventory of emergency housing that provides multi-region and/or CoC wide coverage for young people	BoS CoC, Youth Steering Committee	Upcoming September 2019 with YHDP Projects
Development/improvement of relationships with hotels/motels. Using the Joint TH/RRH approach, utilize hotels/motels as the TH component to meet emergency shelter needs of homeless youth until permanent housing is secured	NCFE, YHDP Implementation Workgroup, BoS CoC	Winter 2019
Objective 1.3 Expansion of coordinated entry access points that are youth focused	Responsible Party	Timeframe
Further develop and establish formal partnerships between All Doors Lead Home Coordinated Entry and youth serving providers outside of the traditional housing crisis service system, e.g. Connected Youth Initiative, Community Response, faith-based community providers, etc...	BoS CoC, UNL-CCFL, Non-CoC Funded Project Development Group, NCFE/CYI	Ongoing
Work with Department of Education on McKinney Vento Liaisons use of Coordinated Entry and their ability to make referrals and track contact for the by-name list.	UNL-CCFL, Nebraska Department of Education	Ongoing
Expansion of the HMIS system coverage to youth serving providers outside of the traditional housing crisis service system, e.g. Connected Youth Initiative, Community Response, faith-based community providers, etc...	UNL-CCFL, NCFE CYI, BoS CoC	Upcoming September 2019 through YHDP Projects
Objective 1.4 Develop resource capacity to prevent and divert youth from experiencing homelessness	Responsible Party	Timeframe
Implement Youth Eviction Prevention programming including rental assistance (possibly with Universal Damages Fund)	Non-CoC Funded Project Development Group, NCFE/CYI	Commencing Winter 2019
Expand legal services, renters rights, and immigration legal needs and host Landlord Liaison meetings/summits	BoS, CoC, UNL-CCFL, NCFE/CYI, Legal Aid of Nebraska	Ongoing
Short-term financial support to secure alternative housing: <ul style="list-style-type: none"> • Arrearages (utility/rent) • Transportation: funds to relocate where there is stable housing • Other short-term support 	Non-CoC Funded Project Development Group, NCFE/CYI	Ongoing
Creation of universal damages fund	Non-CoC Funded Project Development Group, NCFE/CYI	Upcoming December 2019
Assist youth in assembling documentation, and resolving issues that could lead to housing loss	BoS CoC and ESG Providers, NCFE CYI	Ongoing
Objective 1.5 Develop infrastructure and service capacity to transport youth to housing availability	Responsible Party	Timeframe
Funding for transportation costs as a program activity	Non-CoC Funded Project Development Group, NCFE/CYI	Upcoming December 2019
Match Saving program to help youth make a vehicle purchase as an asset	Non-CoC Funded Project Development Group, NCFE/CYI	Ongoing
Coaching services to help transport youth or develop a transportation plan	Non-CoC Funded Project Development Group, NCFE/CYI	Upcoming October 2019
Provide Transportation support to move communities for Sex Trafficking and Domestic Violence victims	Non-CoC Funded Project Development Group, NCFE/CYI	Upcoming January 2020

Objective 1.6 Explore alternative housing models that incorporate youth-driven supports	Responsible Party	Timeframe
Shared living arrangement programs that can assist youth in being able to afford housing long term	BoS CoC, Youth Steering Committee, UNL-CCFL, NCFE/CYI, Non-CoC Funded Project Development Group	Upcoming September 2019 through YHDP Projects
Help youth find suitable roommates to share a living space paid for a period of time	BoS CoC, Youth Steering Committee, UNL-CCFL, NCFE/CYI, Non-CoC Funded Project Development Group	Upcoming December 2019
Coaches to meditate the shared living space if needed	BoS CoC, NCFE/CYI	Upcoming September 2019 through YHDP Projects

GOAL TWO: Youth imminently at risk of or experiencing homelessness have healthy and thriving services and connections and attachments to family, community, school, and other social networks.

Objective 2.1 Develop technology-based solutions to permanent connections	Responsible Party	Timeframe
<i>Websites or Apps:</i> The YHDP effort in Nebraska has to address the barriers of limited resources and large distances between available resources. This will require the YHDP effort to look at advanced technology to increase access for youth to identify supports and resources, expand telehealth services for mental health, and provide support to youth 24 hours a day	YAB, UNL-CCFL, Non-CoC Funded Project Development Group, NCFE/CYI	Ongoing
<i>Social Media Influencer:</i> The YHDP effort in Nebraska will attempt to increase public awareness and access for youth to identify supports and services via communication and social media platforms that are most used by young people. This will be done by hiring youth and young adults as "social media influencers" to share targeted content and messages with the young adult audience and directly connect young people to trusted supports and services in the community.	Non-CoC Funded Project Development Group, NCFE/CYI, YAB	Upcoming November 2019 after project plans begin implementation
Objective 2.2 Explore alternative case management models for youth	Responsible Party	Timeframe
Educate all current CoC and ESG providers on referral process to Connected Youth Initiative coaching services	Non-CoC Funded Project Development Group, NCFE/CYI	Ongoing

Objective 2.3 Improve and expand connections to current community-based resources	Responsible Party	Timeframe
Provide education and encourage collaboration between CoC and ESG providers with central navigators so youth engaged in the CoC have access to community-based supports and services (e.g. Opportunity Passport™, Youth Leadership, etc.) and CYI-involved youth have access to housing supports via the CoC	Non-CoC Funded Project Development Group, NCFE/CYI, BoS CoC, UNL-CCFL	Ongoing
Expand CYI Coaching (including Back on Track, financial case management, parenting support) to unserved areas of CoC	NCFE/CYI, BoS CoC	Upcoming in September 2019 through YHDP Projects
Expand Knowledge of Peer-to-Peer support networks	NCFE/CYI, BoS CoC, YAB	Ongoing
Objective 2.4 Expand youth-focused training for housing system case management staff	Responsible Party	Timeframe
Statewide implementation of Your Money Your Goals toolkit for financial case management	Non-CoC Funded Project Development Group, NCFE/CYI	Ongoing
Implement Reaching Teens training on strength-based, trauma-informed communications strategies, fostering resilience-building, and supporting healthy adolescent development	Non-CoC Funded Project Development Group, NCFE/CYI	Ongoing
Expand Knowledge and Access to Back on Track and JAG (Jobs for American Graduates) post- secondary and career path best practices	Non-CoC Funded Project Development Group, NCFE/CYI	Ongoing
Objective 2.5 Expand connection to existing mainstream resources	Responsible Party	Timeframe
Continue to promote and engage youth with Medicaid and Economic Assistance programs through ACCESS Nebraska	All Homeless System Providers, NEDHHS	Ongoing
Coordinate training and cross training between Housing System and Behavioral Health System on trauma-informed approaches	NEDHHS, UNL-CCFL, Non-CoC Funded Project Development Group, NCFE/CYI	Upcoming January 2020 to fill in gaps of project plans
Provide stipends for mental health therapy and addictions services through System of Care for youth experiencing homelessness	NEDHHS, Regional Behavioral System Providers, NCFE CYI	Upcoming January 2020 to fill in gaps of project plans
Increase referrals to SSI/SSDI Outreach, Access and Recovery (SOAR) for assistance in securing SSI/SSDI and track through HMIS	NEDHHS, UNL-CCFL, NCFE/CYI	Ongoing
Objective 2.6 Develop resources and programming that holistically engage the youth and family	Responsible Party	Timeframe
Mediation and other supports focused on family reunification	NCFE/CYI, Family Housing Advisory Services Fair Housing Department	Ongoing
Expansion of legal services and immigration services	NCFE/CYI, Legal Aid of Nebraska, NEDHHS	Ongoing
Develop dual generation supports for parenting youth to include coaching, parent assistance fund, parenting classes	Non-CoC Funded Project Development Group, NCFE/CYI	Ongoing

GOAL THREE: Youth imminently at risk of or experiencing homelessness are actively engaged in education, training, and employment activities to thrive in adulthood and building behaviors and attitudes that allow long-term success as an adult at work, in relationships, and in the community.

Objective 3.1 Develop education and workforce opportunities across the continuum that meet the diverse workforce needs of youth	Responsible Party	Timeframe
Connect youth to One-Stop Centers across the state. Including a referral to the one-stop providers through the Department of Labor and the youth services of WIOA.	NCFF/CYI, NE Department of Labor, One-Stop Providers	Ongoing
Expand implementation of Back on Track™ program that engages community colleges to provide youth with supports focused on retention from first semester to second semester	NCFF/CYI, Non-CoC Funded Project Development Group	Ongoing
Objective 3.2 Further develop partnership between educational system (all levels) stakeholders and Continuum of Care	Responsible Party	Timeframe
Provide HMIS access, training, and support to all McKinney-Vento Liaisons	UNL-CCFL, NE Department of Education	Ongoing
Provide All Doors Lead Home Coordinated Entry access (via HMIS), training, and support to all McKinney-Vento Liaisons	UNL-CCFL, NE Department of Education	Ongoing
Further engage early care and higher education partners	BoS CoC, UNL-CCFL - Coordinated Entry	Upcoming Summer 2019
Work with DOL to align with the JAG program (Jobs for America's Graduates)	NCFF/CYI, Department of Labor	Ongoing
Align with Back on Track efforts for postsecondary supports and career pathways	Non-CoC Funded Project Development Group, NCFF/CYI	Ongoing
Post-secondary and career pathway efforts with coaching supports	Non-CoC Funded Project Development Group, NCFF/CYI	Ongoing

GOAL FOUR: The NE BoS CoC will have designed and implemented a youth homeless services system that is ending youth homelessness as determined by the United States Interagency Council on Homelessness.

Objective 4.1 Identifies all unaccompanied youth experiencing homelessness	Responsible Party	Timeframe
Identify all unaccompanied youth who are unsheltered, in shelter, or in transitional housing	BoS CoC, UNL-CCFL, NCFE/CYI	Ongoing
Identify all unaccompanied youth who are doubled up or couch-surfing and considered homeless under any federal definition.	BoS CoC, UNL-CCFL, NCFE/CYI	Spring 2019
Objective 4.2 Use prevention and diversion strategies whenever possible, and otherwise provide immediate access to low-barrier crisis housing and services to any youth who needs and wants it.	Responsible Party	Timeframe
Development of Rapid Response (Joint TH-RRH programming)	BoS CoC, YHDP Project Applicants	Spring 2019
Expansion and further development of prevention and diversion efforts as specified in the action steps of this plan	NCFE, BoS CoC, YHDP Project Applicants	Spring 2019
Objective 4.3 Use coordinated entry processes to effectively link all youth experiencing homelessness to housing and services solutions that are tailored to their needs	Responsible Party	Timeframe
Expansion of the HMIS and All Doors Lead Home Coordinated Entry across multiple youth serving systems including Nebraska Department of Education and Nebraska Children's Connected Youth Initiative as detailed in this plan	BoS CoC, UNL-CCFL, NCFE, NE Department of Education	September 2019

Objective 4.4 System acts with urgency to swiftly assist youth to move in to permanent or non-time-limited housing options with appropriate services and supports	Responsible Party	Timeframe
Increased access to the All Doors Lead Home Coordinated Entry system	BoS CoC, UNL-CCFL	Ongoing
Development of additional Permanent Supportive Housing inventory	BoS CoC, YHDP Project Applicants	September 2019
Development of additional Rapid Rehousing inventory	BoS CoC, YHDP Project Applicants	September 2019
Objective 4.5 System has resources, plans, and system capacity in place to continue to prevent and quickly end future experiences of homelessness among youth	Responsible Party	Timeframe
Continued development of public and private resources opportunities to sustain long-term housing services and inventory	BoS CoC, Non-CoC Funded Project Development Group	Spring 2019
Further refinement and development of a continuous quality improvement effort	BoS CoC, UNL-CCFL, YAB	Winter 2019
Continue to incorporate the youth voice through the Youth Action Board in all aspects of the CoC	BoS CoC, YAB, NCFF/CYI	Ongoing

PROPOSED COC FUNDED INTERVENTION TYPES

Joint TH-RRH	
Summary	Interventions of this type are designed to allow for immediate emergency housing of youth while permanent Rapid Rehousing solutions are obtained. With the absence of sufficient (geographically limited) emergency shelter in the BoS CoC the joint TH-RRH programming is an excellent model to quickly provide crisis housing as needed while youth are being connected with appropriate permanent housing solutions.
Needs Met	Increases housing inventory and shelter, crisis housing availability across a wider geography than shelter beds would provide. Provides for the crisis housing needed to stabilize youth while they seek permanent housing solutions.
Target Population	Youth age 19 to 24 years of age and unaccompanied minors
Project Requirements	Proposed project adheres to Housing First model. Proposed project provides enough rapid re-housing assistance to ensure that at any given time a program participant may move from transitional housing to permanent housing. Projects may serve persons for up to 24 months total. Proposed projects will be targeting geographic areas of need Proposed projects will house 100% of youth through ADLH CE
HUD Homeless Categories & HUD CoC Project Type	Category 1, 2, & 4 Joint TH-RRH
Outcomes	85% of participants exit to permanent, independent housing 80% of participants do not return to homeless situation within 12 months Avg. LOS in TH component less than 30 days.
Innovation Opportunities	A joint TH-RRH project could provide support to temporary host homes (or leasing some other short term rental such as hotel/motel as well as provide rental assistance to support the transition. Youth could also choose to relocate, using the temporary housing in one part of the CoC and RRH elsewhere. Waiver request to extend RRH beyond 24 months.
NE BoS CCP Goal & Objective addressed	Goal #1 & Objective 1.2 Goal #4
USICH Outcome(s) addressed	Stable Housing, Social – Emotional Well-Being

Host Home	
Summary	Interventions of this type are to provide crisis housing through Host Homes Model in existing homes with adult hosts for all youth ages 19-24 that are unsheltered or in a shelter. Host Home programming opens up housing options in rural communities where crisis options are extremely limited and creates the opportunity for youth integration into stable communities. The Host Home program model has worked effectively in parts of the BoS CoC and should be as effective in all areas of the CoC.
Needs Met	Increases housing opportunities, inventory and availability across a wider geography than any other single housing program.
Target Population	Youth age 19 to 24 years of age and unaccompanied minors
Project Requirements	Proposed project adheres to Housing First model Proposed projects will house 100% of youth through ADLH CE
HUD Homeless Categories & HUD CoC Project Type	Category 1, 2, & 4 Joint TH-RRH
Outcomes	85% of participants exit to permanent, independent housing 80% of participants do not return to homeless situation within 12 months
Innovation Opportunities	Opportunities to be explored for innovation are the development of a formal support connection with CYI coaches and service system. Also to be explored are Host Home projects that include youth under 19 years of age (minors in Nebraska). The opportunity to further develop within our communities the shared commitment to youth through outreach and recruitment of host homes in the faith and philanthropic communities..
NE BoS CCP Goal & Objective addressed	Goal #1 & Objective 1.1, Objective 1.6 Goal #4
USICH Outcome(s) addressed	Stable Housing, Social – Emotional Well-Being, Permanent Connections

Coaching Support Services	
Summary	<p>Coaching is a strength-based case management approach that includes collaboration, youth empowerment, family, and community engagement as the core values and strategies. This approach focuses on preparing the youth to participate in service activities that will help them identify and achieve their chosen goals that prepare him/her for adulthood. The youth will have the opportunity to work with a coach to develop their goals and outcomes in order to master life skills. This is viewed as a process overtime and one that will require consistent teaching, feedback, and ongoing assessment of their progress towards self-efficacy and developmentally appropriate self-independence.</p> <p>Crisis Line/Network Staffing</p> <p>Coaches will assist with housing navigation for assigned youth in community of their choice.</p> <p><u>The services will address 7 outcome areas for youth:</u></p> <ol style="list-style-type: none"> 1. <i>Personal and Community Engagement:</i> Youth have supportive relationships, are able to access services in the community to achieve their personal goals and have a voice and connection to their community. 2. <i>Education:</i> Youth receive sufficient education and training to enable them to obtain and retain employment. 3. <i>Employment:</i> Youth generate a sufficient income to support themselves by obtaining and retaining employment. 4. <i>Daily Living:</i> Youth have access to safe, stable, affordable housing in the community that is near public transportation, school and work. 5. <i>Physical and Behavioral Health:</i> Youth have sufficient and affordable health insurance and services for both physical and behavioral health. 6. <i>Training, Education and Policies:</i> Independent living services have the capacity to address the individual needs of youth in transition. 7. <i>Economic Stability:</i> Provide youth with assistance in understanding daily budgets, accessing financial assistance and services, opening/maintaining bank accounts, and other financial learning skills. <p>Housing Navigation: assist with applying for specific housing opportunities, transportation to housing appointments, educating young adults of lease responsibilities. Will also work with landlords to identify available units and maintain positive community collaborations.</p>
Needs Met	Increase the amount available and geographic distribution throughout the CoC of supportive services for youth.
Target Population	Youth age 19 to 24 years of age and unaccompanied minors
Project Requirements	<p>Proposed projects adhere to Housing First model.</p> <p>Proposed projects will have sufficient resources dedicated for or have identified sufficient levels matching supportive case management for number of units proposed.</p> <p>Proposed projects will be targeting geographic areas of need.</p> <p>Ideal project will have CoC wide coverage to serve regardless of youth location.</p> <p>Proposed projects will house 100% of youth through ADLH CE</p>
HUD Homeless Categories & HUD CoC Project Type	<p>Category 1, 2, & 4</p> <p>Supportive Services Only</p>
Outcomes	<p>Tracking of goals in the youth independent living plan</p> <p>Track the number of hours addressing the different needs of the youth</p> <p>Track referrals received and sent for services</p>

Rapid Response Assistance	
Summary	<p>Interventions of this type are designed to provide rapid, one-time financial assistance to either maintain youth in current housing or rapidly place in housing. Youth needing more than short-term assistance would be more appropriately served through the TH-RRH or PSH interventions.</p> <ul style="list-style-type: none"> • Short-term rental assistance <ul style="list-style-type: none"> o Which can include rental and security deposits • Supportive services <ul style="list-style-type: none"> o Assistance with moving costs, which can include relocation o Housing search and counseling which can include rental application fees, mediation with landlords o Legal services which can address landlord/tenant disputes o Transportation o Utility deposits o And, of course, case management support <p>Youth receiving rapid response assistance will be connected to the Coaching Services SSO project(s) for additional support.</p>
Needs Met	<p>This type of intervention serves the community by functioning as both a diversion program preventing youth (Category 2) that are not yet in a literally homeless situation from ever entering and as rapid rehousing to quickly move those that are recently homeless into permanent housing. This intervention is specifically focused on those youth that need very short-term but immediate rental assistance and support assistance in order to avoid entering Category 1 or 4 or to exit a homeless situation.</p>
Target Population	Youth age 14 to 24 years of age and unaccompanied minors
Project Requirements	<p>Proposed Project adheres to Housing First model</p> <p>Proposed Project allocates sufficient and appropriate resources for supportive case management up to six months after rental assistance.</p> <p>Youth receiving assistance must score < # on Coordinated Entry Priority Score</p>
HUD Homeless Categories & HUD CoC Project Type	Category 1, 2, & 4 Joint TH-RRH
Outcomes	<p>< 8% exit to homelessness</p> <p>> 55% increase earned income from entry to exit</p> <p>< 10% return to homelessness in 12 months - < 15% in 24 months</p>
Innovation Opportunities	<p>Opportunity for Rapid Response proposed project/s to span entire BoS CoC geography and not limited to regional service areas utilizing Connected Youth Initiatives Coaches for supportive services. The YHDP preference in programming of this type are a single program that provide CoC wide Rapid Response or 2 programs that cover half of CoC each.</p> <p><i>Additional Opportunities include through the YHDP waiver process the ability to allow leasing or operating costs as an eligible cost (Waiver #2), to provide rental assistance and leasing the same structure or housing unit for different participants - shared housing (Waiver #4), and to provide initial lease for less than 12 months (Waiver #5).</i></p>
NE BoS CCP Goal & Objective addressed	<p>Goal #1 Objectives 1.1, 1.4, 1.6</p> <p>Goal #2 Objective 2.4</p> <p>Goal #4</p>
USICH Outcome(s) addressed	Stable Housing & Education and Employment

Permanent Supportive Housing for Youth	
Summary	Permanent supportive housing programs are to provide indefinite leasing or rental assistance and supportive services for youth ages 19-24 with long-term disabilities.
Needs Met	Increase the amount available and geographic distribution throughout the CoC of housing for youth with long term disabilities that will not successfully maintain housing via other options.
Target Population	Youth age 19-24 with long-term disabilities. Dedicated plus.
Project Requirements	Proposed projects adhere to Housing First model Proposed projects will have sufficient resources dedicated for or have identified sufficient levels matching supportive case management for number of units proposed Proposed projects will be targeting geographic areas of need Proposed projects will house 100% of youth through ADLH CE
HUD Homeless Categories & HUD CoC Project Type	Category 1 & 4 Permanent Supportive Housing
Outcomes	90% of participants remain in or exit to permanent housing < 5% exit to homelessness < 10% return to homelessness in 12 months - < 15% in 24 months
NE BoS CCP Goal & Objective addressed	Goal #1 Objective 1.1 Goal #2 Objective 2.1 Goal #4 Objective 4.3 & 4.5
USICH Outcome(s) addressed	Stable Housing, Permanent Connections, Employment & Education, Social and Emotional Well-Being

Coordinated Entry	
Summary	The All Doors Lead Home Coordinated Entry system is a no-wrong door system that identifies, diverts, assesses, prioritizes, and develops housing plans and makes referrals for persons experiencing homelessness in the CoC.
Needs Met	With the addition of new YHDP projects and specifically expansion of CoC access and identification of youth meeting Category 2 homelessness and further integration of the McKinney-Vento Homeless Liaisons and the Connected Youth Initiative coaching efforts the work requirements on ADLH CE staff will increase significantly requiring additional staffing and system development to prioritize and case plan youth experiencing homelessness
Target Population	Youth age 19-24
Project Requirements	Coordinated Entry Lead Utilize BoS All Doors Lead Home Coordinated Entry System
HUD Homeless Categories & HUD CoC Project Type	Category 1 & 2, 4 Supportive Services Only - Coordinated Entry
Innovation Opportunities	Development of processes and social networks and media apps that connect youth to resources and the CE system. Cultivating additional public and private door CE access points including local community HUBS such as libraries, community centers, and convenience stores.
Outcomes	100% of housing entries through All Doors Lead Home Coordinated Entry

Homeless Management Information System	
Summary	HMIS projects are to provide system development, training, infrastructure, software, report development and measurement to the CoC, the YHDP implementation, and funded projects.
Needs Met	Expansion of the HMIS is a required program type to provide the needed system development, training, and CQI measurement and ongoing support to the increase in CoC funded programs and to allow for the expansion of the HMIS and the All Doors Lead Home Coordinated Entry to the wider service system in the Balance of State.
Target Population	All housing and homeless service system providers within the Nebraska BoS CoC (NE-500) and other youth serving agencies and providers that connect with the homeless service system.
Project Requirements	YHDP CoC Projects for HMIS Software Licenses; CoC identified HMIS Lead Agency applicant
HUD Homeless Categories & HUD CoC Project Type	Category 1, 2, 3, & 4 Homeless Management Information System
Outcomes	100% HMIS coverage of youth serving housing inventory 100% of housing entries through All Doors Lead Home Coordinated Entry <5% null / missing data Submission and acceptance of 100% of LSA (AHAR) shells
Innovation Opportunities	Development of the HMIS and CE system beyond standard housing and homeless services system. Increased involvement of McKinney-Vento Homeless Liaisons in HMIS
NE BoS CCP Goal & Objective addressed	Goal #1 Objectives 1.1, 1.2, 1.3, 1.4, 1.5 Goal #3 Objective 3.3 Goal #4 Objectives 4.1, 4.3
USICH Outcome(s) addressed	Stable Housing, Permanent Connections, Employment & Education, Social and Emotional Well-Being

PROPOSED LIST OF NON-HUD FUNDED PROJECTS

Many of the non-HUD funded projects listed below have been developed due to the Connected Youth Initiative (CYI), a public-private partnership that has developed strategies to support youth who have experienced the Nebraska foster care and Juvenile Justice system. With the addition of YHDP to Nebraska, many of these strategies will be aligned or expanded to support youth at risk of or who are currently or have experienced homelessness.

Increase Financial Supports for Youth	
Summary	Nebraska would like to see the expansion of credit focused interventions and access to financial resources. This would include extended financial literacy programs, credit counseling opportunities, match savings programs, and access to low interest loan. This work will focus on opening bank accounts, debt reduction, asset development, and alternatives to predatory lending options. Service providers will also be provided with training about personal finances and advanced budgeting using the Bureau of Consumer Protections Your Money Your Goals front line worker financial toolkit.
Needs Met	Poverty becomes not just a financial status, but a way of life. Many youth grow up in the family situations affected by generational poverty which provides them with an unhealthy model for economic well-being. Many of our system youth rarely hold first jobs prior to aging out of system involvement. Youth often find themselves as new adults and left to survive independently without support or sufficient knowledge about personal finances. To achieve economic self-efficacy, youth must be taught skills to manage basic finances, develop savings habits, and build economic hope that they can work towards financial resources provided by employment or loans. To do this, YHDP and CYI developed ways for older youth to practice economic skills through trial and error, within a safety net of stability provided by financial coaching services, financial literacy, and match savings programs.
Target Population	Youth age 19 to 24 years of age and unaccompanied minors
Project Requirements	Programs will provide and/or refer youth to receive basic financial literacy. Direct Support staff will be trained to utilize Your Money Your Goals financial toolkit. Community based financial institutions will be engaged through MOU or other program agreements in order to provide youth with safe and reliable banking products and accounts.
HUD Homeless Categories & HUD CoC Project Type	Category 1, 2, 3, & 4
Outcomes	70% of participants had enough money to pay last month's expenses 50% of participants have someone to turn to for a loan in time of crisis
Innovation Opportunities	The intervention will be an expansion and developed of financial case management and increased access to financial focused programs for youth who have or are experiencing homelessness. Financial case management approach teaches caseworkers to integrate credit, savings, employment, and advanced budgeting (income-to-debt ratio practices) into standard independent living plans for homeless youth. As a result, youth begin to see the impact that financial decisions have on their fiscal and independent forecast and begin practicing skills for adulthood, while still supported by the safety net developed by YHDP.
NE BoS CCP Goal & Objective addressed	Goal #1 Objectives 1.1, 1.4, & 1.5
USICH Outcome(s) addressed	Stable Housing, Social-Emotional Well-Being, and Career and Education

Increase Rural Access to Legal Services	
Summary	Increased access to Legal Aid and immigration law services to reduce legal barriers to housing stability. These services would focus on eviction law, debt and creditor renegotiation, fair housing practices, renter rights, immigration, and other legal needs.
Needs Met	Many of our homeless youth have limited access to affordable and safe housing due to past evictions, lack of understanding around the requirements in their lease agreements, bad credit, and a lack of naturalization and legal status. The increase of publicly available legal services will increase youth's access to fair housing resources, negotiate and remove previous evictions, and consolidating debt with creditors to free up income to pay monthly bills.
Target Population	Youth age 19 to 24 years of age
Project Requirements	Develop a referral process to gain access to Legal Aid Nebraska and Immigration Services of Nebraska. Community and provider-based approaches to identify the appropriate legal supports needed to address the needs of youth.
HUD Homeless Categories & HUD CoC Project Type	Category 1, 2, 3, & 4
Outcomes	Develop Baselines for youth: <30% of youth who have an eviction notice lose housing Serve 80% of youth who require immigration services Reduce evictions youth 19 - 24 experience in rural Nebraska
Innovation Opportunities	The innovation is an active referral network between the CoC providers and Legal Aid of Nebraska and Immigration Legal Services. The legal services provide youth and CoC providers with strategies to address past evictions, juvenile record concerns, immigration needs, and other legal barriers to longer-term success for youth.
NE BoS CCP Goal & Objective addressed	Goal #1 Objective 1.4 Goal #2 Objective 2.5 Goal #3 Objective 4.1
USICH Outcome(s) addressed	Stable Housing & Permanent Connections

Community-Based Prevention Network

Summary	Nebraska has developed community-based prevention systems that address 7 areas of well-being (health, basic needs, employment, housing, education, financial well-being, permanency) for youth, children, and families. These collaboratives use a central navigation approach to help individuals access services and track data around needs and gaps in services. Central navigation uses a common referral form, data collection on a systems level, and coordinates services and referrals. The combination of central navigation and the Homeless coordinated entry system, the BoS CoC communities will have the resources to address the holistic needs of youth across all 7 areas of success. Also, the YHDP grant will be able to enhance the core components of employment/education & permanent connections by building off what the preventions systems have already established in Nebraska.
Needs Met	Nebraska's community prevention systems looks at well-being strategies to address the needs of at-risk youth and families. With the alignment of community-based central navigation and coordinated entry from the BoS CoC, communities will have the resources to support youth needs while having real resources to address the most expensive and difficult barrier of housing.
Target Population	Youth age 19 to 24 years of age and unaccompanied minors
Project Requirements	Common referral practices Data Sharing across systems Youth-Centered approach and holistic services
HUD Homeless Categories & HUD CoC Project Type	
Outcomes	80% of youth are able to get access to mental, dental, and physical health services 80% of youth who have access to reliable transportation for work and school 90% of youth that have someone to count on in time of need and crisis
Innovation Opportunities	Nebraska communities have developed preventions systems that work across the life span and focus on seven areas of well-being (health, basic needs, employment, housing, education, financial well-being, permanency). The combination of the YHDP and coordinated entry adds a housing first approach to a well-being preventions system for a holistic best practice to serve homeless youth in Nebraska.
NE BoS CCP Goal & Objective addressed	Goal #1 Objective 1.3 Goal #2 Objective 2.2, 2.3, & 2.4 Goal #3 Objective 3.2 Goal #4 Objective 4.1
USICH Outcome(s) addressed	Housing Stability & Permanent Connections

Economic Development and Housing Development

Summary	This would be a public campaign to reduce the stigma of “low income housing” in Nebraska communities. This would help align YHDP efforts to increase available housing units with the current efforts to build housing through funding provided by the Nebraska Housing Trust Fund and the Department of Economic Developments Workforce Housing Fund. There is also a strategy to look at new housing development, increase zoning for housing options for homeless youth, and/or repairing and remodeling available housing units in rural communities.
Needs Met	Every rural community deals with housing issues that are created by a lack of affordable housing, housing that meets code, and/or housing that is controlled by landlord monopolies where a limited number of landlords own the majority of available housing for youth. The combination of several housing development projects focused on reducing rural population drain and increasing economic opportunities for rural communities provides YHDP with additional resources and momentum to educate our rural Nebraska communities.
Target Population	Youth age 19 to 24 years of age
Project Requirements	TBD as the partnership is developed between the YHDP steering group, Nebraska Housing Trust Fund, and the Department of Economic Development Workforce Housing Fund.
HUD Homeless Categories & HUD CoC Project Type	Category 1, 2, 3, & 4
Outcomes	TBD in partnership with YHDP, Nebraska Housing Trust Fund, and the Department of Economic Development
Innovation Opportunities	The innovation this would create an alignment between economic development efforts with homeless elimination efforts by building and developing additional housing options for rural communities.
NE BoS CCP Goal & Objective addressed	Goal #1 Objectives 1.1, 1.2, & 1.6
USICH Outcome(s) addressed	Housing Stability

Develop a collaboration with Sex Trafficking regional and state task force/providers/advocates

Summary	It was identified that YHDP success depends on connecting coordinated access with other efforts to support youth transition into safe and stable housing. This will require that coordinated access create partnerships with regional sex trafficking task forces and the Nebraska domestic violence councils. These connections will help cross train on best practices and align resources to support youth to find safe and stable housing options.
Needs Met	Removal from the dangerous relationships of sex trafficking and domestic violence requires safe and stable housing as an intervention to allow for healing and self independence. The risk of being homeless leads so many of our youth to choosing between their own safety or having a place to live. This partnership will help youth in these situations have better housing options, while cross training homeless providers on how to identify and holistically address the needs of victims of sex trafficking and domestic violence.
Target Population	Youth age 19 to 24 years of age
Project Requirements	Cross training on the needs of the population and additional services/supports. Support youth to move from communities that are unsafe to other communities in the state.
HUD Homeless Categories & HUD CoC Project Type	Category 1, 2, 3, & 4
Outcomes	TBD by the steering committee for YHDP and the Nebraska Task Force on Sex Trafficking
Innovation Opportunities	The victims of sex trafficking and domestic violence are so often faced with the chose between safety and shelter. This combination of efforts to stop sex trafficking/domestic violence and the elimination of youth homelessness, Nebraska has an opportunity to create housing services and options that provide new hope to victims. This combination will give victims access to safe and stable housing, supports to move to new communities, and a focus on their social/emotional well-being.
NE BoS CCP Goal & Objective addressed	Goal #1 Objectives 1.5 & 1.6 Goal #2 Objective 2.2
USICH Outcome(s) addressed	Housing Stability, Permanent Connections, & Social-Emotional

Combine YHDP with additional Post Secondary Education and Career Pathway work in Nebraska

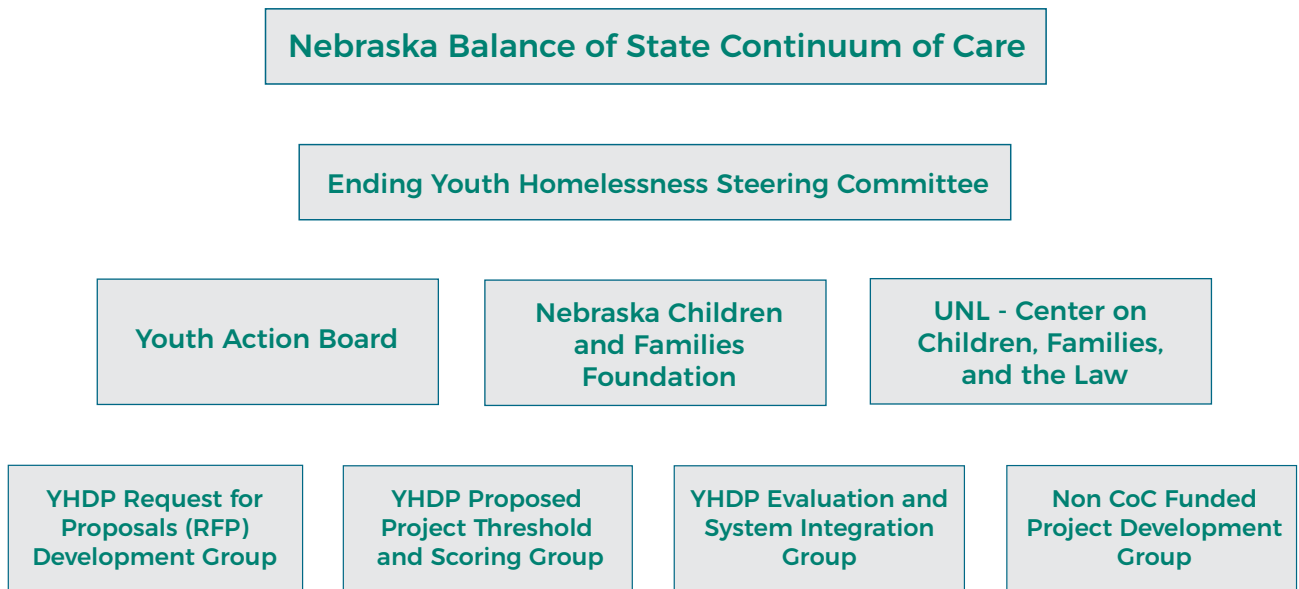
Summary	The Learn and Earn to Achieve Potential (LEAP) initiative aims to increase educational and employment opportunities for youth and young adults ages 14 to 24 who are in foster care, involved in the juvenile justice system, and/or homeless. This strategy will provide support to YHDP youth by using the evidence-based Jobs for the Future Back on Track™ model.
Needs Met	In this youth-driven process, Nebraska YHDP youth at high statistical risk of unfavorable life outcomes will progress through an intentional continuum of guided educational and employment competencies that yield postsecondary educational achievement, job credentials and careers of choice, with the goal of economic security.
Target Population	Youth age 14 to 24 years of age
Project Requirements	Must focus on postsecondary education preparation Enrollment and persistence for youth on their education goal Career training and exploration Career placement and work experience Poverty prevention, asset building and financial case management through coaching supports Mental and behavioral health supports Youth engagement and leadership opportunities.
HUD Homeless Categories & HUD CoC Project Type	Category 1, 2, 3, & 4
Outcomes	30% enter postsecondary education or career training 50% Persist through their first year of postsecondary education 30% Acquire employment or work experience
Innovation Opportunities	The innovation is the LEAP program has an opportunity to work with all community colleges across the state of Nebraska. This would be new rural help for youth to access additional supports to help them stay enrolled in job training, certificate programs, and/or postsecondary programs. The LEAP work in Nebraska's urban areas has increased foster youth enrollment in these types of education programs from 4% to 28% of the foster youth population over the past 3 years.
NE BoS CCP Goal & Objective addressed	Goal #1 Objective 1.1 Goal #3 Objective 3.1 & 3.2
USICH Outcome(s) addressed	Education and Employment

Create a statewide eviction prevention program

Summary	Eviction prevention in rural communities is another essential approach to reduce and eliminate youth homelessness. This strategy would connect youth to legal aid services to remove past evictions from their credit history and/or work to advocate and mediate current eviction efforts. It would also require that youth have access to case managers, i.e. community coaches, to support them to work out a plan for housing sustainability. This plan would address the youth's budget, housing options, employment, parenting needs if necessary, and other variables that would hinder the youth from making consistent and on-time rental payments in the future. The youth would also be required to contribute a portion of the past due rent and on-going rent, while the community could make a match payment to cover the remaining past due and current rent payments.
Needs Met	This would provide intervention and support to maintain youth in their current housing and remove the financial burden that occurs when youth are evicted. It would increase housing stability and housing disruptions for youth.
Target Population	Youth age 19 to 24 years of age
Project Requirements	Ability to provide rental assistance funding and back rent funding. Work with landlords, host home providers, and management companies to reduce conflict and maintain the housing. Provide on-going coaching after the removal of an eviction threat to help the youth develop stability.
HUD Homeless Categories & HUD CoC Project Type	Category 1, 2, 3, & 4
Outcomes	Establish baselines: Track the number of youth who receive 3 day notices Average amount of rental assistance needed to maintain living arrangement
Innovation Opportunities	The innovation is a strategy to eliminate housing instability and uprooting of youth lives. This intervention will help youth maintain their residence which leads to reduce crisis cycles and social-emotional trauma.
NE BoS CCP Goal & Objective addressed	Goal #1 Objective 1.4 Goal #4 Objective 4.2
USICH Outcome(s) addressed	Housing Stability and Social-Emotional

GOVERNANCE STRUCTURE

YHDP STAKEHOLDERS



Decision-making structure

As the lead agency, Nebraska Children and Families Foundation has designated Jason Feldhaus, Vice President of the Connected Youth Initiative as the project lead. Mr. Feldhaus will provide oversight to the YHDP community planning and implementation process. Nebraska Children and Families Foundation reports to the CoC's Ending Youth Homelessness Steering Committee, the entity responsible for the overall design and implementation of the YHDP.

The Ending Youth Homelessness Steering Committee will support an end to youth homelessness by providing leadership, assisting with prioritizing youth in CoC activities and allocating resources. Its membership is comprised of ten members, including CoC Executive officers, representatives from the YHDP lead agency, Nebraska Children and Families Foundation, representatives from CoC Collaborative Applicant, HMIS and Coordinated Entry Lead, and CoC Planning lead from the University of Nebraska-Lincoln - Center on Child and Families and the Law (UNL-CCFL), representatives from the Youth Action Board and representatives from the Nebraska Department of Health and Human Services, Nebraska Department of Education, Office of Probation, Nebraska Attorney General's Office, Governor's Commission on Housing and Homelessness, and two youth-serving agencies representatives.

Four workgroups to coordinate specific YHDP and CCP functions have been identified. The workgroups are: the YHDP Request for Proposals (RFP) Development workgroup; the YHDP Proposed Project Threshold and Scoring Group; the YHDP Evaluation and System Integration Group; and the Non-CoC Funded Project Development Group.

All workgroups are supported and facilitated by Nebraska Children and Families Foundation, with support from the UNL-CCFL and the Youth Action Board. All workgroups include Youth Action Board members and work in conjunction with each other as necessitated. Each report directly to the Ending Youth Homelessness Steering Committee.

Plan for continuous quality improvement

Continuous quality improvement and evaluation are key components to the effective implementation of system change to achieve the four key outcomes. Therefore the Nebraska BoS YHDP implementation will include a robust CQI – evaluation structure, methods, and processes to continually inform and assess the effectiveness of system and program efforts.

The YHDP Evaluation and System Integration Workgroup will develop both system and programmatic level evaluation plans, benchmarks, methods, measures, reporting elements and timelines based upon the final approved Comprehensive Community Plan and the specific projects implemented.

This team includes members of the YAB, the HMIS and Coordinated Entry lead organization, key partner and system stakeholders as well as program agency members. The workgroup will incorporate the USICH Ending Youth Homelessness Benchmarks and the NE BoS CoC System Performance Measurements as well as those developed out of the CCP.

This will be accomplished through the utilization of HMIS and Coordinated Entry data systems to the fullest extent possible and will continue to integrate system partner's (Department of Education, Department of Health and Human Services, and Division of Probation) data sets into comprehensive CQI and evaluation data sets. The ability to share data across these different complex systems will us examine the cross system data sets to assist in identifying cross system needs that are not easily identified within a single data system. The Nebraska YHDP CQI and Evaluation will provide regularly reporting to the Nebraska Balance of State Continuum of Care through the YHDP Steering Committee and Youth Action Board.

The Nebraska YHDP will measure and assess effectiveness using the following YHPD Performance Measures:

- Number of unaccompanied youth experiencing unsheltered homelessness.
- The length of time youth remain homeless.
- The extent to which youth who leave homelessness return to homelessness.
- Overall reduction in the number of homeless youth.
- The number of individuals and families who become homeless for the first time.
- Successful housing placement to or retention in a permanent housing destination.

Additionally, performance measures developed for NDHHS Runaway and Homeless Youth efforts, including changes in social and emotional well-being, perception of safety, permanent connections, school enrollment or graduation and employment status will be collected by projects receiving YHDP CoC funding.

In addition the Nebraska Youth Experiencing Homeless Needs Assessment conducted in the winter of 2017 will be conducted every other year with the next assessment in winter of 2019 midway through the YHDP implementation. The needs assessment will be conducted by the UNL - Center on Children, Families, and the Law with input and guidance from the Nebraska Balance of State CoC and the YHDP Steering Committee. The needs assessment will incorporate both provider and youth input and examine service and housing data.

A major emphasis throughout the efforts and CoC and NoN-CoC funded strategies and programs described in our CCP is the expansion of data collection system capacity and data-quality through the expansion of HMIS utilization and Coordinated Entry Access among the larger youth serving community in the Balance of State CoC in order to comprehensively identify and assist all youth in housing crisis or experiencing homelessness.

YHDP COMMUNITY PARTNERS

Partner Type	Partner's name	Involvement
CoC and ESG Program Recipients	Residential Assistance to Families in Transition (RAFT); Central Nebraska Community Action Partnership (CNCAP); Community Action Partnership of Mid-Nebraska (MID); Community Action Partnership of Western Nebraska (CAPWN); Region V Systems; Northeast Nebraska Community Action Partnership (NENCAP); Community Action Partnership of Lancaster and Saunders Counties (CAPLS); Care Corps Family Services; Blue Valley Community Action Partnership; Hope Harbor; The Connection	All of the CoC and ESG program recipients were invited to be partners in the YHDP process since the beginning and were invited to attend the CPP planning session in Grand Island in October 2018. CoC providers understand the responsibility of the CoC to approve the CPP and the projects created as a result of the CPP and to assist with the continuous quality improvement of the plan and projects moving forward during implementation.
Youth Advisory Boards	Nebraska BoS Youth Action Board	Nine youth action board members were present during the CPP draft planning session held in October 2018 in Grand Island, Nebraska. These YAB members were actively involved in the small group breakouts on the USICH four core elements and gave guiding tips/feedback to the other stakeholder who were present on ways to connect to the youth they are serving. The YAB will continue to participate in the CPP planning process and will approve the final plan as well as the funded projects that are a result of the CPP.
Local and State Government	Nebraska Commission on Housing and Homelessness	The NCHH will support the comprehensive plan as developed and integrate into the NCHH efforts by contributing available resources, working to assist with implementation of the plan, and increasing public knowledge about youth homelessness and Nebraska's effort to end youth and all types of homelessness.
	Nebraska Attorney General's Office - Human Trafficking Task Force	The Human Trafficking Task Force will be providing feedback on the plan in terms of strategies geared towards identification of youth feeling violent situations as well as educating victim services providers across the state of the YHDP's ability to serve that population. The Human Trafficking Task Force will also be a bridge to educating law enforcement on the coordinated entry process.
Public Child Welfare Agencies	Nebraska Department of Health and Human Services, Division of Child and Family Services	Representatives from DHHS-CFS were an active participant in the YHDP strategic planning efforts of the coordinated community plan. DHHS-CFS will combine their current discharge planning efforts to CYI to the statewide coordinated entry system. They will also educate their teams on the efforts in place to prevent youth from discharging their systems of care into homelessness. DHHS-CFS will work with the YHDP planning team combine the efforts of their current transition age youth program, Bridge to Independence, with the YHDP community plan.

Partner Type	Partner's name	Involvement
ESG Program distributor	The Nebraska Department of Health and Human Services – Nebraska Homeless Assistance Program (NHAP)	The NDHHS NHAP office as the ESG recipient has been and is actively involved in the development of the CCP.
Local and State Law Enforcement and Judges		Will be making a broader connection to law enforcement across the state through the assistance of the Nebraska Attorney General's Office Human Trafficking Task Force.
Early Childhood Development and Child Care providers	In the process of making a more sustainable connection	Throughout the State of Nebraska, the Community Action agencies are the primary Early Head Start programs. Each CAP agency has an internal referral system to other resources within their services once an individual begins working with them.
Local and State Educational Agencies	Nebraska Department of Education	The Nebraska Department of Education State Liaison Coordinator has been an active member of the YHDP planning since the application process. Several of the local homeless education liaisons were able to join the CPP planning in October 2018 and have now made efforts to become members of the Coordinated Entry System. The state coordinator will continue to educate all liaisons across the state on how to connect young adults and/or families to the CE system in their local communities.
Runaway and Homeless Youth Program Providers	Community Action Partnership of Western Nebraska	CAPWN will serve as member of the Youth Homelessness Steering Committee and be a major participant in development of the coordinated community plan. CAPWN provides housing, supportive services and is an active participant in coordinated entry as a public access point.
Non-Profit Youth Organizations	Nebraska Children and Families Foundation (NCFE)	NCFE will serve as the lead agency for the YHDP, therefore being the strategic planning lead facilitator. NCFE will also be the lead facilitator of the EYH YAB and will provide support to those members.
	Central Plains Center for Services – PALS program	CPSC PALS was an active member of the coordinated community plan planning efforts and will continue to provide supportive services to youth – PALS workers connect closely with the CYI communities as well as Coordinated Entry.
	Maryland Living Center	As a transitional living facility for young adults, Maryland Living Center participated in the CPP planning and is currently in the process of becoming an access point for the CE system.

Partner Type	Partner's name	Involvement
Juvenile and Adult Corrections and Probation	Nebraska Office of Probation	<p>The Nebraska Office of Probation does not have a current relationship with the NE BoS CoC, however, they do have a long standing partnership with the lead agency, NCFE. They have been a key player in the development and recent expansion of the Connected Youth Initiative in order to better serve young adults transitioning out of the justice system.</p> <p>The Nebraska Office of Probation (juvenile and adult divisions) participated in the YHDP program by providing expert feedback on services and needs of a special population of youth as a part of the coordinated community plan.</p>
Health, Mental Health, and Substance Abuse Agencies	In process of connecting to partner	(Region V systems youth network)
WIOA Boards and Employment Agencies	ResCare	Connecting the One Stop Centers across the state as non-public door access points for Coordinated Entry Referrals.
Public Housing Authorities	In process of connecting to partner	The Balance of State CoC has put an emphasis on working with local PHA's across the state to designate a homeless preference for their vouchers. North Platte Public Housing Authority has agreed to implement this practice in the near future.
Institutions of Higher Education	University of Nebraska-Lincoln	The University of Nebraska-Lincoln, Center on Children, Families and the Law (CCFL) is the home of the Collaborative Applicant for the BoS CoC as well as the HMIS and Coordinated Entry leads. As an organization, CCFL has been involved since the application process of the YHDP and will continue with the planning efforts as well as providing valuable assistance for the continued quality improvement aspect.

OFFICIAL REPRESENTATIVES:



Chyanne Cusick
Chyanne Cusick, Representative

Nebraska Balance of State Youth Action Board



Erin Nelson, Chair

Nebraska Balance of State Continuum of Care



Matt Wallen, Director of the Division of Children and Family

Nebraska Department of Health and Human Services



Ryan Durant, Chair

Nebraska Commission on Housing and Homelessness

REFERENCES

- Choi, S.K., Wilson, B.D.M., Shelton, J., & Gates, G. (2015). *Serving Our Youth 2015: The Needs and Experiences of Lesbian, Gay, Bisexual, Transgender, and Questioning Youth Experiencing Homelessness*. Los Angeles: The Williams, Institute with True Colors Fund
- Coalition for Juvenile Justice - Youth Homelessness and Juvenile Justice: Opportunities for Collaboration and Impact, Vol 1, Issue 1, June 2016. http://www.juvjustice.org/sites/default/files/resource-files/policy%20brief_FINAL.compressed.pdf
- Davies, Benjamin R., N.B. Allen. (2017). Trauma and homelessness in youth: Psychopathology and intervention, *Clinical Psychology Review* (54, June, 17-28).
- Dashow, Jordan. (2017) *New Report on Youth Homeless Affirms that LGBTQ Youth Disproportionately Experience Homelessness*. Human Rights Campaign. <https://www.hrc.org/blog/new-report-on-youth-homeless-affirms-that-lgbtq-youth-disproportionately-ex>
- Elder, Kurt. *Nebraska 2017 Youth Homeless Populations map*. City of Lincoln, Urban Development.
- Pilnik, Lisa (primary author) - Coalition for Juvenile Justice, *Implementing Change: Addressing the Intersections of Juvenile Justice and Youth Homelessness for Young Adults*. <http://www.juvjustice.org/sites/default/files/resource-files/Implementing%20Change%20-%20Juvenile%20Justice%20and%20Youth%20Homelessness.pdf>
- Voices of Youth Count - Chapin Hall at the University of Chicago, *Missed Opportunities: Pregnant and Parenting Youth Experiencing Homelessness in America*. (2018). <http://voicesofyouthcount.org/wp-content/uploads/2018/05/VoYC-Pregnant-and-Parenting-Brief-Chapin-Hall-2018.pdf>